



Enhancing Sustainability in Upstream with Schneider Electric Portfolio

01

Schneider Electric Overview



Schneider Electric is leading the digital transformation of energy management and automation in homes, buildings, data centers, infrastructure and industries.

We are dedicated to making a world that is more electric, more connected from plant to plug, more distributed and more efficient.

We create connected technologies that will reshape industries, transform cities and enrich lives. We power businesses, homes, and industries intelligently, effectively and efficiently.

Our connected products and software enable better, faster, more reliable management of buildings, industries and data centers. We deliver solutions that enable "Life Is On" - when Life is Energized, Efficient and Connected. Our solutions save energy consumption and reduce costs by 30-50%.

We are led by local talent and management expertise in the markets we serve, supported by continuous development and training, so we can be closer to the energy and technology demands of our customers.

We have become the reference in many of our markets, and we want to shape the agenda in new energy and future infrastructure in the rest of the Middle East and Africa region.

180+ years of history and innovation

Beginnings

19th century

The Schneider brothers invest in the Creusot foundries and become major players in the steel and machine industry. Soon, Schneider & Cie enters the emerging electricity market.



Reconstruction

Early 20th century

After two World Wars our company emerges as a diversified business that quickly expands into new markets, including construction and electricity.



Evolution

Late 20th century

The Schneider Group grows through strategic acquisitions and focuses on the electrical industry, energy management and innovative technologies.



Today

21st century

With a unique portfolio of connected technologies: connected products, edge control and apps, analytics and services, we are the global specialist in energy management and automation.



Our technologies ensure that Life Is On everywhere, for everyone, and at every moment

Schneider Electric makes life safe, reliable, efficient, sustainable and connected. Life Is On when life is...

Energized



+50%

energy consumption by 2050 due to urbanization, industrialization and digitalization

2x

faster growth of electricity compared to energy demand by 2040

2.3B

people do not have either access or reliable access to electricity

Efficient



3x

efficiency needed to solve climate change

82%

of the economic potential of energy efficiency in buildings

+50%

of untapped energy potential efficiency in industry

Connected



10x

more incremental connected devices than people by 2020

30B

connected things by 2020

EVERYTHING RUNS ON SOFTWARE

Connectivity that drives business value

We have an opportunity to co-create the future as the new energy world becomes...

More electric



2x

faster growth of electricity compared to energy demand by 2040

More digitized



10x

more incremental connected devices than people by 2020

More carbonized



79%

untapped energy efficiency potential in infrastructure and more than half in industry

More decentralized



70%

of new capacity additions will be renewables by 2040

Our Presence In Colombia | Headquarter for the North Andean Cluster

- **+40** Years of presence in Colombia
- **+500** Employees (40% Women | 60% Men)
- **2** Industrial plants (Funza | Plastic Pipeline Dexson Plant)
- **1** Distribution Center (CEBA)
- **+100** Trading Partner Community



What Is EcoStruxure™?

EcoStruxure™ is our interoperable technology platform, bringing together energy automation and software.

- It provides enhanced value around safety, reliability, efficiency, sustainability, and connectivity.
- In turn, this advancement opens up the digital world to users across key end markets, enabling them to be competitive in today's IoT economy.
- A versatile architecture, EcoStruxure™ is tailored to end markets in which Schneider Electric has decades of deep domain expertise and applied experience: building, data center, industry, and infrastructure.
- The three levels of innovation that help drive full IoT integration across these markets include:



Connected
products



Edge
control



Apps,
analytics,
& services

- Customers can integrate solutions on premise and/or in the cloud. Each level has built-in cyber security to assure peace of mind across the digital landscape.

Our communities of developers, data scientists and hardware and service partners are creating and/or co-creating solutions and applications that you can use in any combination of the innovation levels.



Our technologies enable the digital transformation of industrial automation and energy management

 Industrial automation → Process efficiency



This section displays a variety of industrial automation components. The top row features several HMI monitors showing different data visualizations. Below them are various PLC units and a stack of memory modules. The bottom row includes a large motor drive unit, a smaller control unit, a yellow emergency stop button, and a blue motor.

 Energy management → Energy efficiency



This section displays a variety of energy management components. The top row includes a smart meter, a smartphone with an energy app, and two monitors showing energy data. The middle row features three more monitors displaying different types of energy monitoring interfaces. The bottom row shows a row of power distribution units, a small control unit, and a large industrial switchgear unit.

Secure Power Low Voltage Medium Voltage

A portfolio of integrated digital solutions designed to increase customer efficiency

Life Is On



02

Medium Voltage

Global range presentation

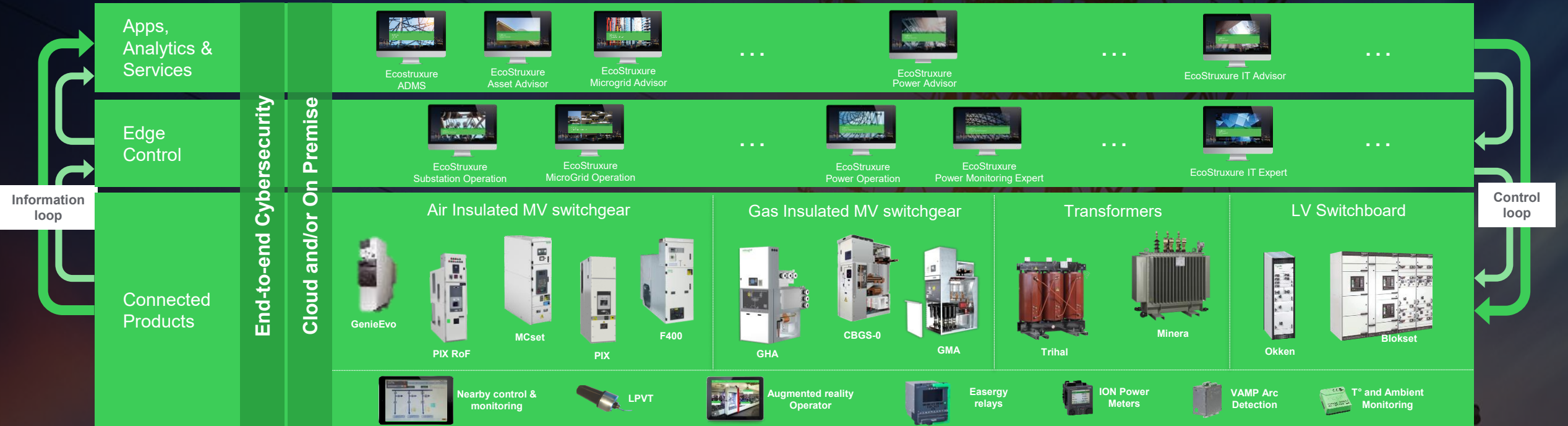
EcoStruxure™ Power

A critical element of EcoStruxure for Mining



Why connected ? | At the heart of EcoStruxure™

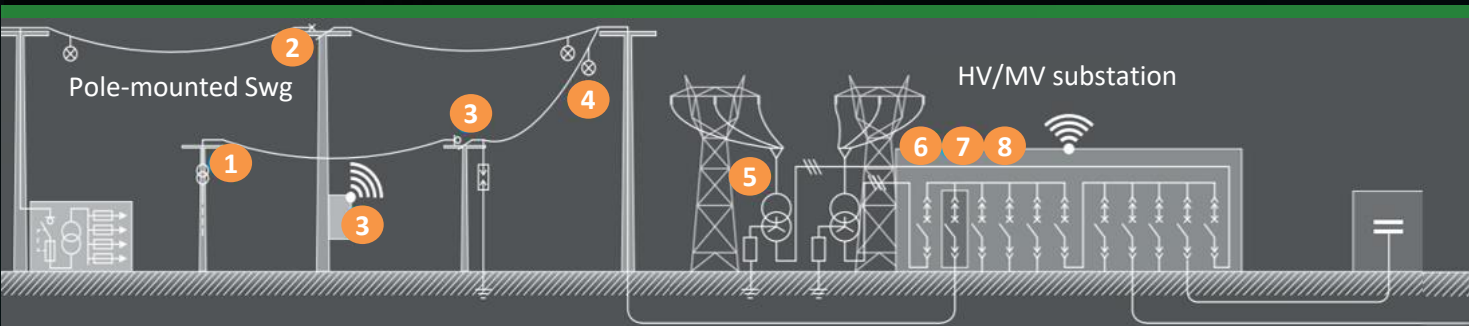
EcoStruxure™ Architecture



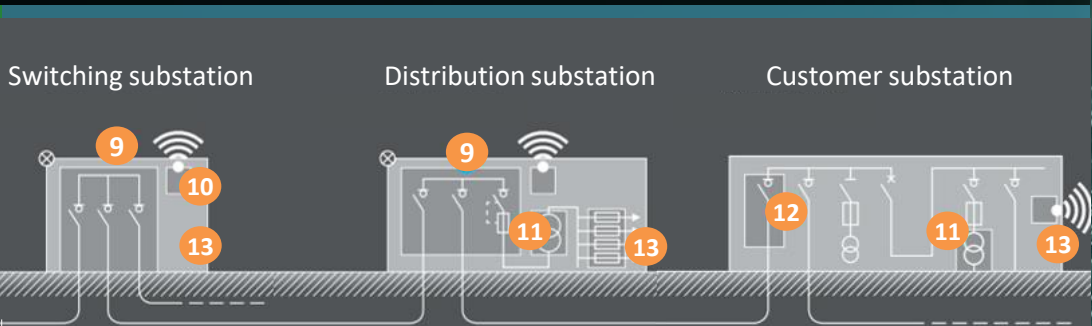
Distribution network

From 7.2 kV to 52 kV

Primary distribution Network



Secondary distribution Network



1 Pole-mounted Transformers



2 Pole-mounted Switchgears



3 Overhead network control and monitoring



4 Fault passage indicators



5 Power transformer



6 Primary switchgears (AIS-GIS)



7 Protection - Monitoring - Metering & control



8 Protection - Monitoring - Metering & control



9 Secondary Switchgear (AIS-GIS)



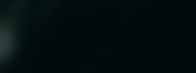
10 Remote Monitoring and fault detection



11 Distribution transformer



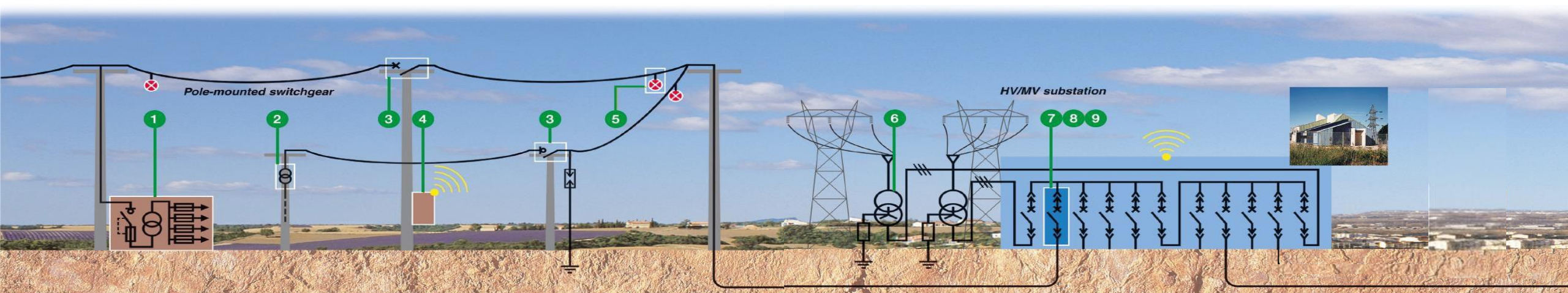
12 Modular Switchboard (AIS)













13 Customer switchboard

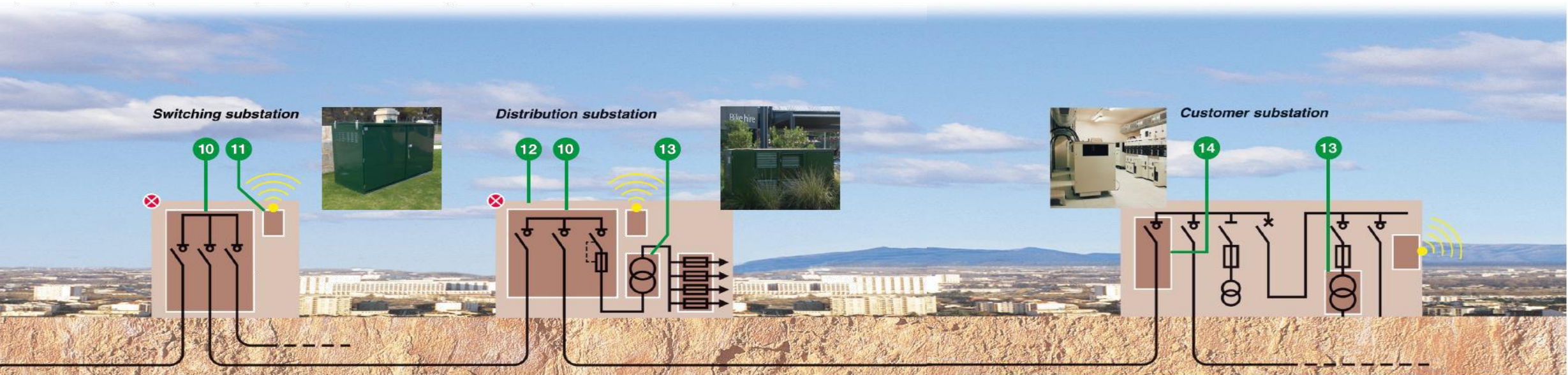


Medium Voltage Distribution



<p>1</p> <p>Prefabricated MV/LV substation (rectangular)</p> 	<p>2</p> <p>Pole-mounted transformers</p> 	<p>3</p> <p>Pole-mounted switchgear</p> 	<p>4 5</p> <p>Overhead network control and monitoring</p> 	<p>6</p> <p>Power transformer</p> 	<p>7</p> <p>Primary substation switchgear</p> 	<p>8 9</p> <p>Digital protection relays and power metering</p> 
<p>KPX Up to 33kV and 3MVA Internal arc classification: IAC-AB according to AS62271.202</p>	<p>Minera Immersed transformer Up to 33kV and 500kVA</p>	<p>E Series Up to 38kV/1250A Recloser</p> <p>RL Series Up to 38kV/630A Load break switch</p> <p>U and W Series Up to 27kV/630A Recloser</p>	<p>AVDC Monitoring, control and protection</p>  <p>Easergy Flite, G200 Communicating fault passage indicator for overhead MV lines</p>	<p>MINERA Power transformer up to 170kV and 80MVA</p> <p>Aurtra Intelligent Sensor Transformer condition monitoring</p> 	<p>Air Insulated Switchgear (AIS) MCset up to 24kV/4000A PIX up to 24kV/4000A GenieEvo up to 13.8kV/2500A F400 up to 36kV/2500A</p> <p>Gas Insulated Switchgear (GIS) GMA up to 24kV/2500A CBGS up to 36kV/2000A GHA up to 36kV/2500A WI up to 52kV/2500A</p> 	<p>Sepam series 10, 20, 40, 60 and 80 protection, metering and control relays</p> <p>MiCOM series Px10, Px20, Px30 & Px40 protection and control relays.</p> <p>Powerlogic Digital Meters Waveform capture and accurate metering</p> <p>VAMP series arc fault detection relays</p>
						<p>Easergy P1 Easergy P1 Overcurrent and Earth Fault protection relays</p> <p>Easergy P3 Easergy P3 Universal and advanced protection relays</p> <p>Easergy P5 Easergy P5 withdrawable protection relays</p>

Medium Voltage Distribution



10
Ring main unit
"Compact" Secondary Switchgear



RM6 up to 24kV/630A
RM AirSeT up to 24kV/630A
DVCAS up to 36kV/630A
Ringmaster up to 13.8kV/630A

11
Remote control
and fault tracking



Easergy T300 and Flair
Remote control, monitoring and
automation using DNP3, Modbus
and IEC61850 protocols

12
Prefabricated MV/LV
substation (square)



KPX²
Up to 22kV and 2MVA
Internal arc classification:
IAC-AB according to
AS62271.202

13
Distribution
transformer



GMX, TESA immersed
transformers up to 33kV
and 4MVA

Trihal dry type
transformers up to 36kV
and 20MVA

14
Modular
Secondary Switchgear



Premset
Up to 17.5kV/1250A
SM6-24
Up to 24kV/1250A
SM AirSeT-24
Up to 24kV/1250A
SM6-36
Up to 36kV/630A

SF6 Free Switchgear

Innovation in Practice with RM AirSeT & SM AirSet



Green switchgear is reinforced with **digital capabilities**. It is EcoStruxure-ready and feeds data to analytics and network management tools.

Schneider Electric has selected **air** for insulation and **vacuum technology** for arc interruption.

Fault breaking: vacuum circuit breaker or **fuse**.

Load current breaking: **Shunt vacuum interrupter (SVI)**, in a tank filled with pressurised air.



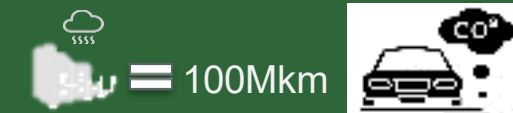
The **European** Commission is considering a ban on F-gases, including **SF6**, to take effect from 2026.



China is already going SF6-free by mandating that a percentage of its procurement must be SF6-free.

The **California** Air Resources Board (CARB) set 2024 as a target for **SF6** to be phased out from all equipment <72 kV.

1kg SF₆ = 25tn CO₂



Pure air and vacuum (SVI)
0 GWP

Future regulations?
0 risk

Gas recycling concerns?
0 gas recycling

Transition concerns?
0 change



Portafolio celdas de media tensión Primarias GIS

GHA - GMA



CBGS-0 - CBGS-2



GHA

- Hasta 40.5kV 40kA 4000A
- Hasta 4500msnm
- Equipado con:
Interruptor en vacío.
- Barra sencilla ó barra doble.
- Barras principales aisladas en SF6.
- **Sin trabajos de gas SF6 en sitio durante:
instalaciones ó ampliaciones.**
- Conectores tipo codo.
- Conexión de Transformadores de Tensión a
través de Seccionador
- Monitoreo de gas SF6 por densímetro.
- Equipo más usado en soluciones de e-house
para 36kV.



GMA-e

- Hasta 24kV 31.5kA 2500A
- Equipado con:
Interruptor en vacío.
- Barras principales en aislamiento sólido.
- Barra sencilla.
- Celdas muy compactas (450mm de ancho para celdas hasta 630A).
- Monitoreo de gas SF6 por Densímetro.
- Sin trabajos de gas SF6 en sitio durante: instalaciones ó ampliaciones.



CBGS-0

- Hasta 36kV 31.5kA 2000A
- Equipado con:
Interruptor en SF6 o en vacío.
- Barras principales en aislamiento sólido.
- Barra sencilla.
- **Sin trabajos de gas SF6 en sitio durante: instalaciones ó ampliaciones.**



CBGS-2

- Hasta 52kV 25kA 2500A
- Equipado con:
Interruptor en SF6.
- Barras principales aisladas en SF6.
- Barra sencilla ó barra doble.
- Excelente solución, como opción a subestaciones de patio para 44 y 46kV.



Portafolio celdas de media tensión Primarias

AIS

PIX



F400



PIX

- Hasta 17,5kV 40kA 4000A
24kV 31,5kA 2500A
- Equipado con:
HVX Interruptor en vacío
CVX Contactor en vacío
- LSC2B - PM
- Grado de protección:
IP3X/4X/42: uso interior
IP54: uso exterior
- Instalación contra la pared
- Interruptor tipo cassette



F400

- Hasta 36kV 31.5kA 3150A
- Equipado con:
HVX Interruptor en vacío
- LSC2B - PM
- Grado de protección:
IP40: uso interior
IP54: uso exterior
- Interruptor tipo cassette



Portafolio celdas de media tensión secundarias

SM6
AIS



RM6 - DVCAS
GIS



PREMSeT
Shielded Solid Insulation
System 2SIS



The new **SF6-Free** Medium Voltage Range : Powered by **Air** and **Digital**

SM AirSeT

Secondary Modular AIS



RM AirSeT

Secondary RMU GIS



GM AirSeT

Primary GIS



SM6

- Hasta 24kV 20kA 1250A
36kV 25kA 1250A
- Equipado con:
Seccionador (IM)
Seccionador fusibles (QM)
Interrupor fijo + seccionador (DM1-A)
Entrada directa (GAM)
Medida (GBC-A ó GBC-B)
- LSC2A - PI
- Grado de protección:
IP30: uso interior



SM6 24kV



SM6 36kV

SM AirSeT

- Hasta 24kV 25kA 1250A
- Equipado con:
 - Seccionador
 - Seccionador fusibles
 - Interrupor fijo + seccionador
 - Entrada directa
 - Medida
- LSC2A - PI
- Grado de protección:
 - IP30: uso interior



SM AirSeT 24kV

RM6

- Hasta 24kV 20kA 630A
- Equipado con:
Interrupor en SF6.



PREMSET

- Hasta 17,5kV 25kA 1250A
- Equipado con:
Interruptor en vacío ó seccionador.
Principal uso en redes con interruptor.
- Barras principales en aislamiento sólido.
- Barra sencilla.
- Encapsulamiento en resina apantallada.
- Prueba de sumergibilidad.
- Diseño compacto y ecológico.

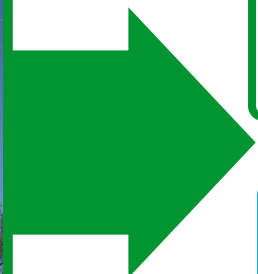


Range & Offer description

Reclosers are strategic for Utilities and for Schneider Electric

- ❖ Overhead networks represent > 80% of the electrical networks in the world.
- ❖ Reclosers are the main smart switchgear used on O/H Networks
- ❖ Reclosers form an integral part of most utilities smart grid strategies
- ❖ Offer is consistent with SE Smart Network / Smart Solution strategy
- ❖ Offer is consistent with SE strategy to increase services business (installation, maintenance, retrofit)

AUTOMATED VERHEAD



> RECLOSERS

E-Series U-Series W-Series



Embedded Automation

ADVC Controller range / T300

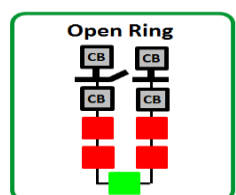
Operation / Protection/
Communication / Automation



> Rated Up to 38kV / Up to 800A Nominal Current / Up to 16kA Interruption capability

Intelligent Loop Automation

→ SOLUTION



> SECTIONALISERS

RL-Series



PM6



Linked

T200/300

Operation
Automation
Communication



> AIR BREAK SWITCH

SBC



TRLF



> Rated Up to 38kV / Up to 1250A rated current

Life Is On

Schneider
Electric

Substation Monitoring Device (SMD) *Combo Version*

One unique interface for MV substation



Local monitoring & remote alarming

- HMI with single line diagram with temperature and current values
- Thermal monitoring per cubicle
- Environmental monitoring per cubicle
- Circuit breaker monitoring
- COMBO Minera ODT monitoring
- COMBO Trihal CRT monitoring



* optional



Thermal relay

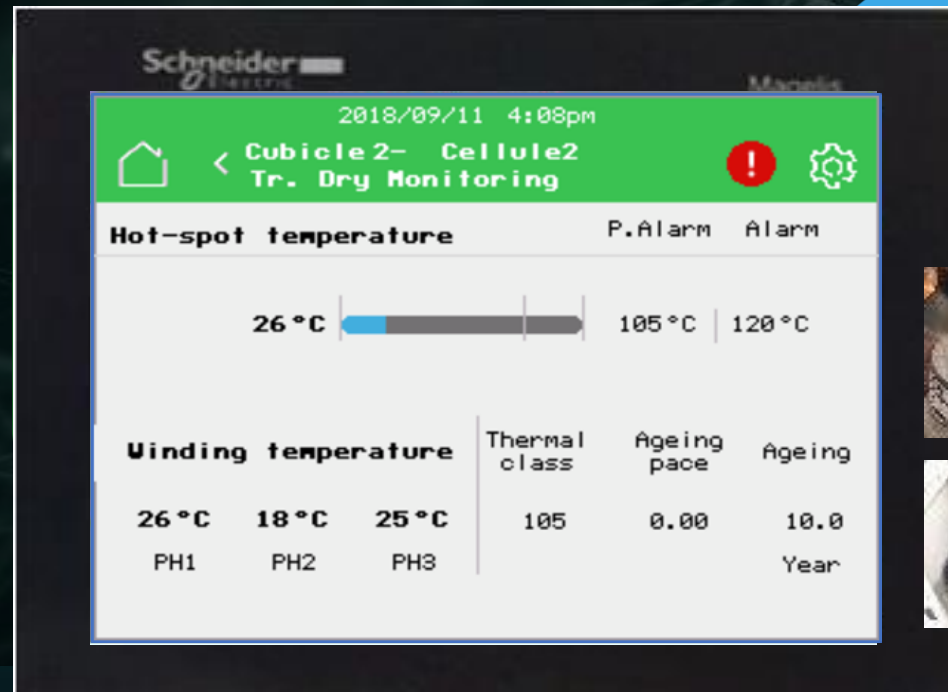


Concentrator

Loose or in a box *



SMD

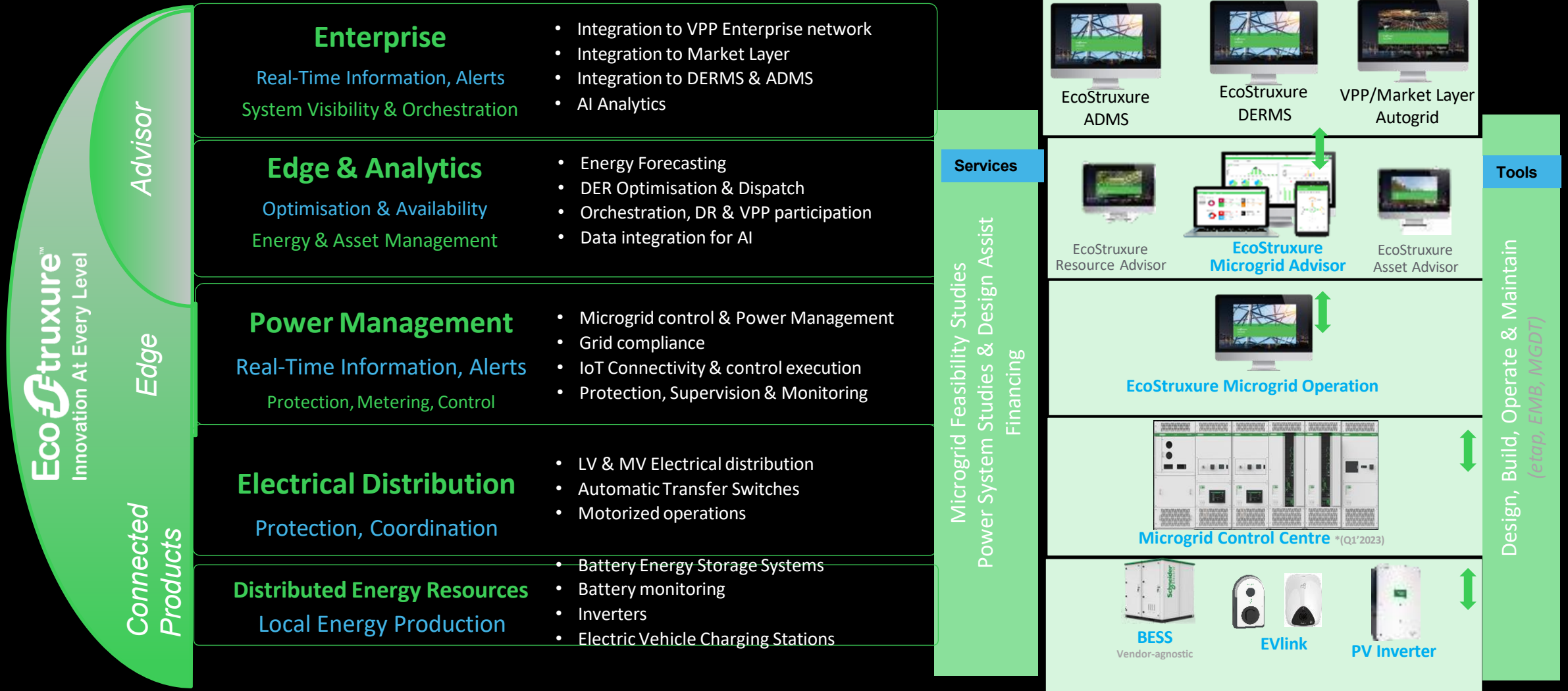


More than 700,000 cubicles Installed

BlokSeT LV switchboards are trusted by
customers worldwide



Schneider Electric provides the fully integrated Microgrid Solution stack



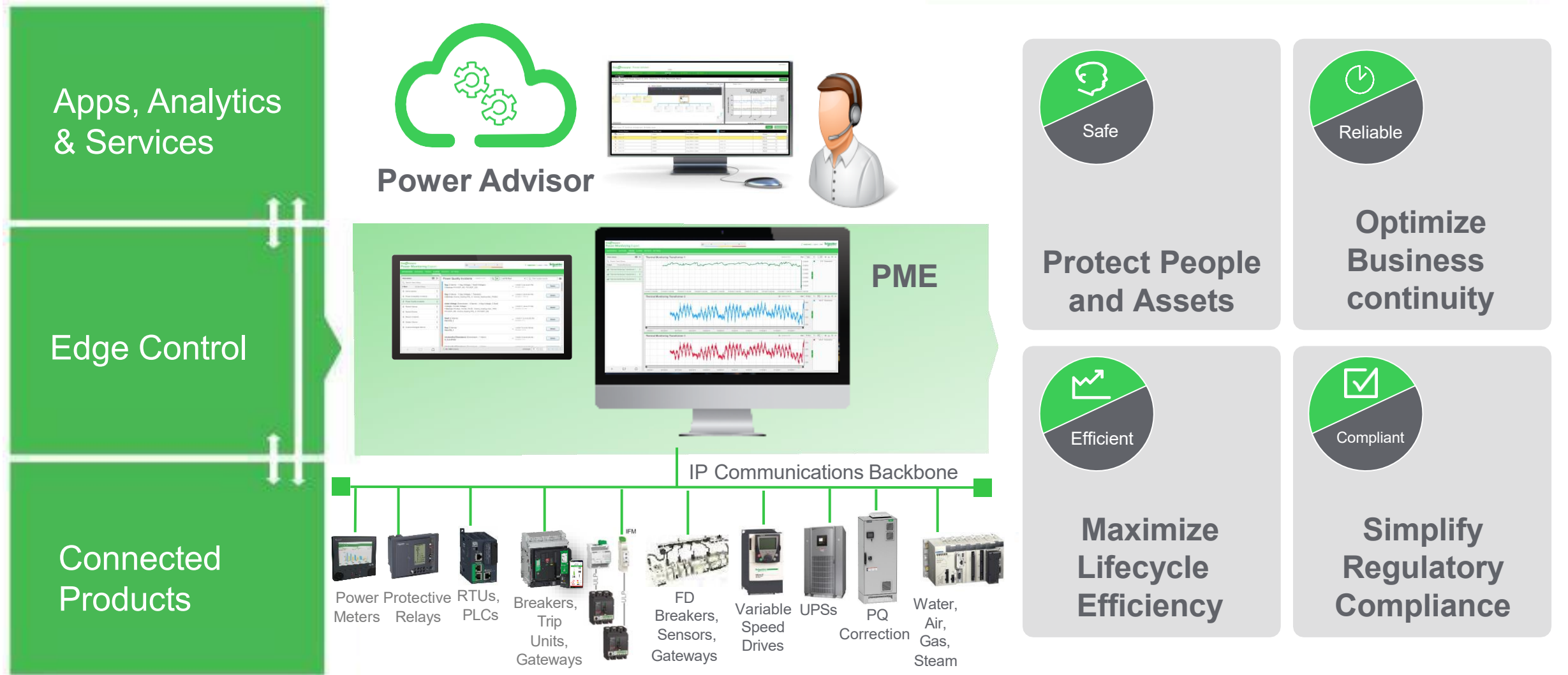
03

Digital Energy

Global range presentation

Gain and Edge on your Competition

Power Monitoring Expert brings edge control to power distribution



What is Power Management?

Power Systems are a Critical Process

- Just like any other processes in your facility, your electrical distribution network needs to be monitored and/or managed.
- Power Management is the ongoing measurement of an electrical power distribution system via intelligent, communicating energy and power devices connected to software for data collection, visualization, analysis and reporting

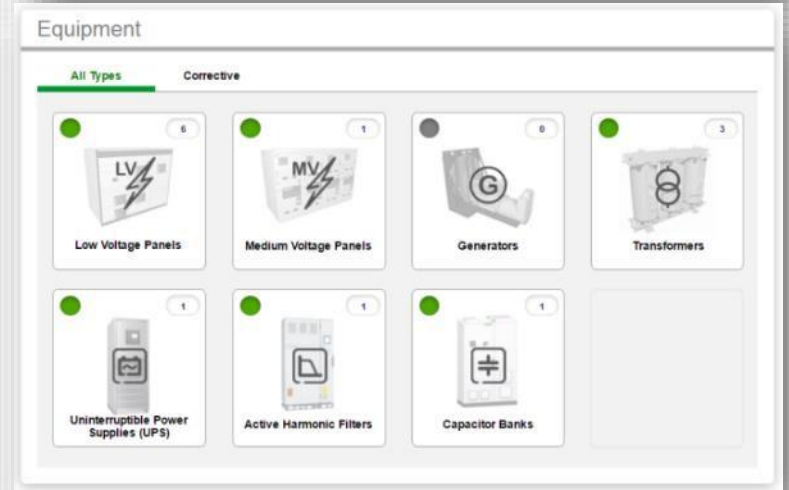
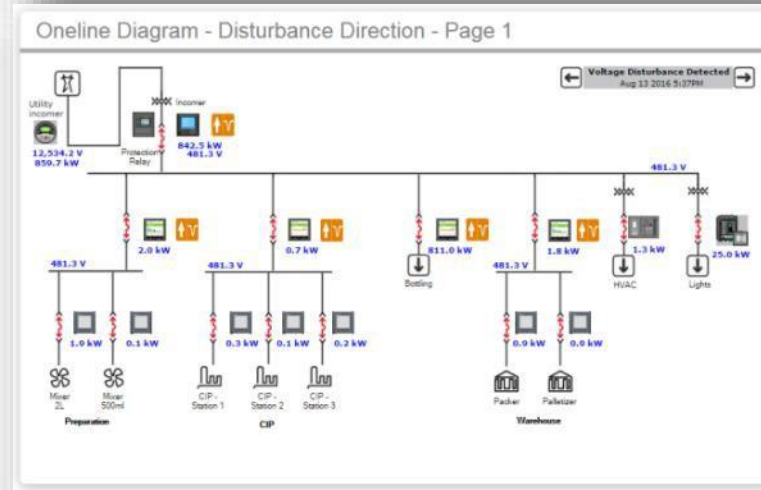
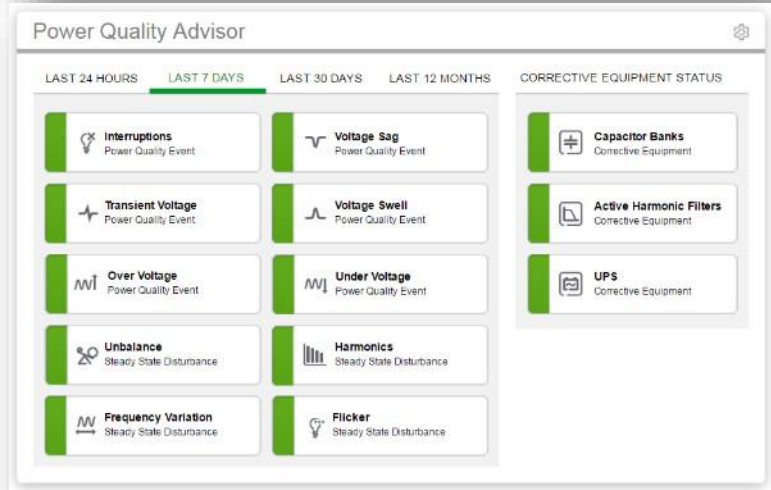
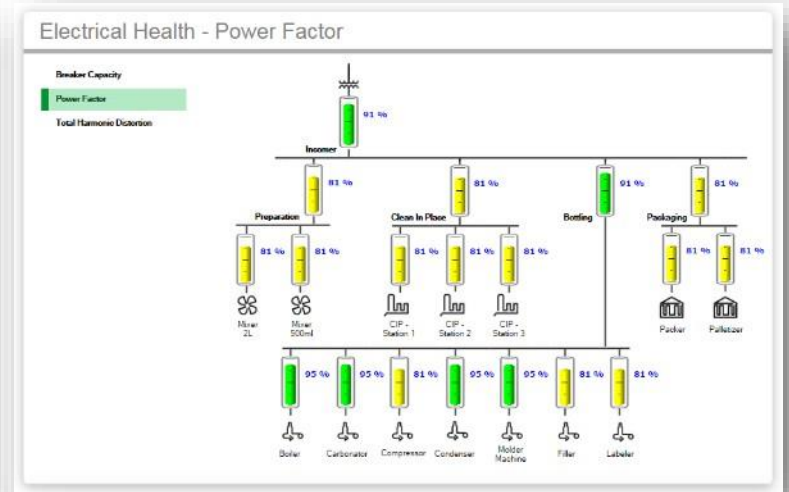
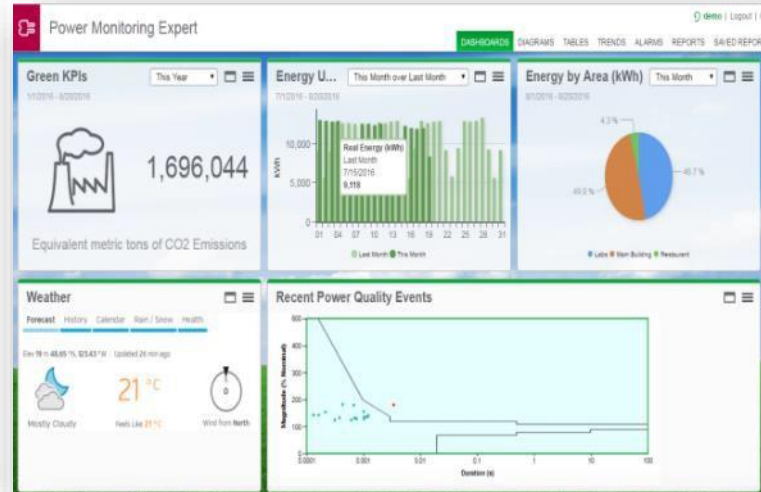
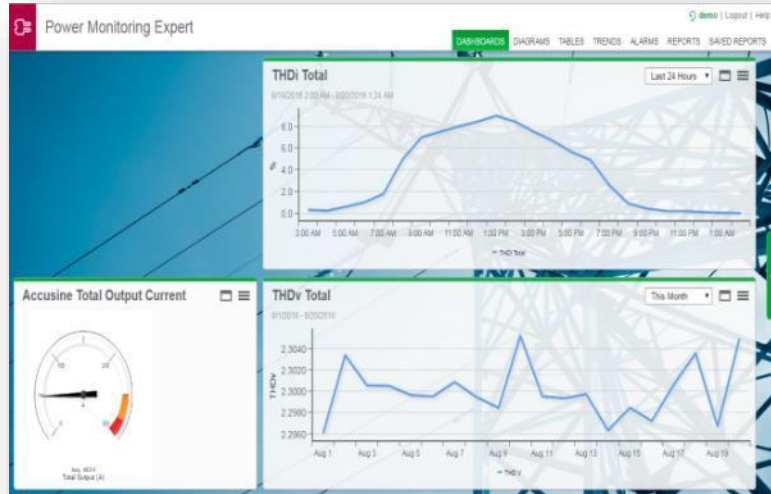


Life Is On

Schneider
Electric

[PME] Dashboard

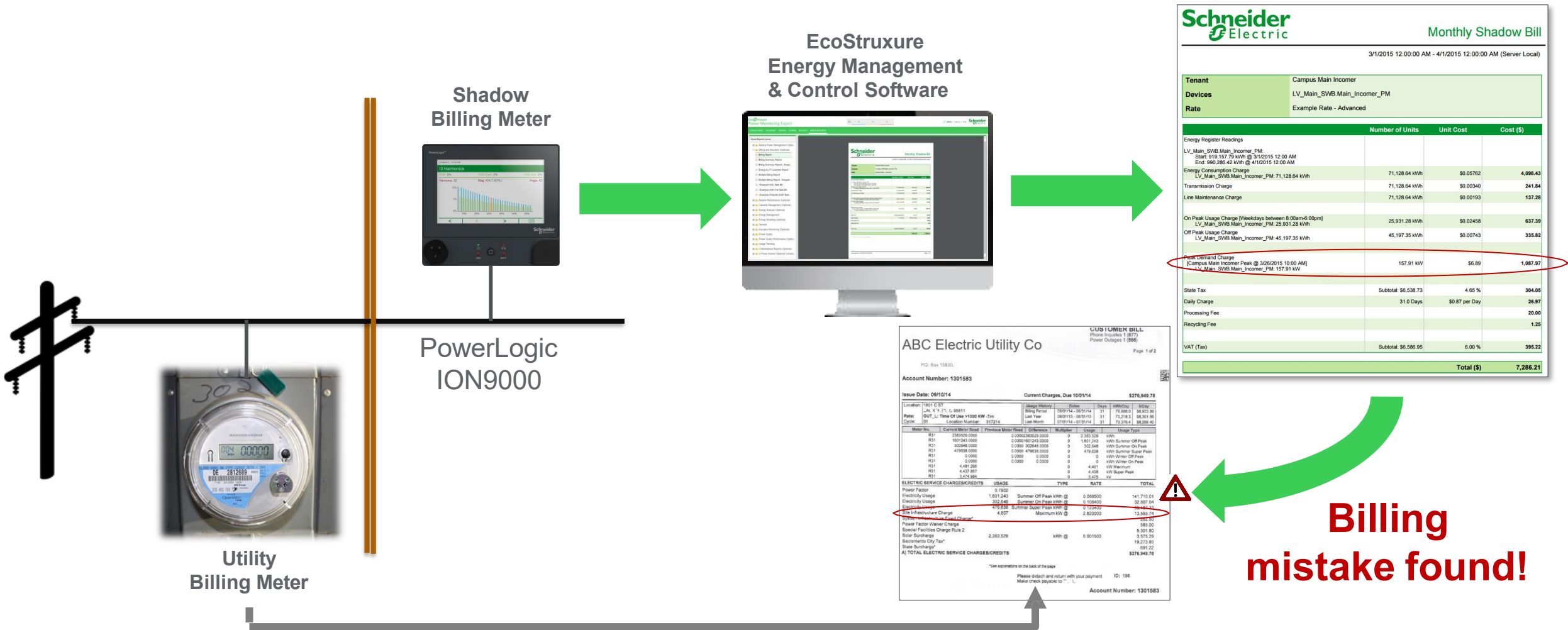
PQ related information



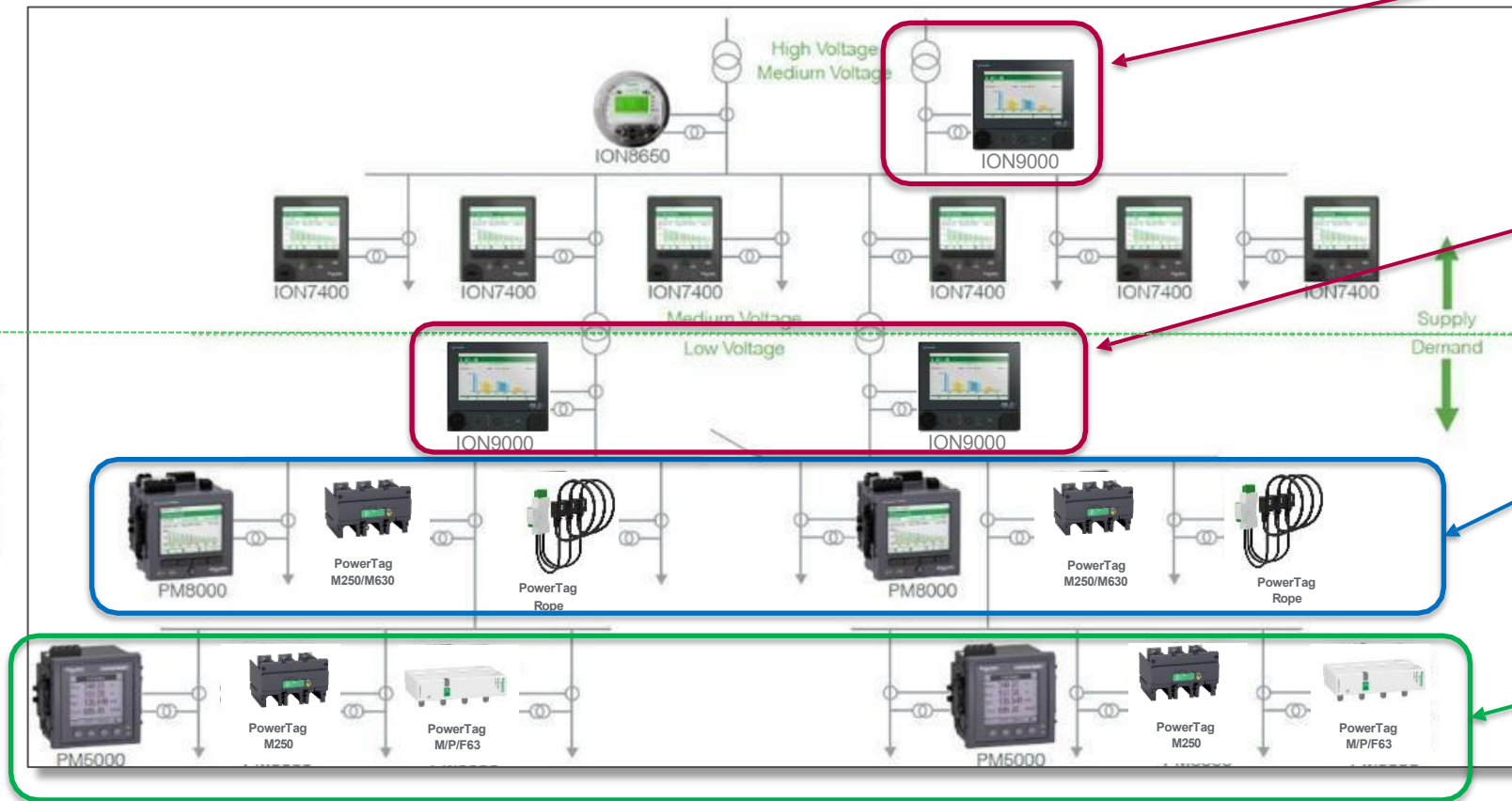
Utility Bill Verification

Save money by reducing energy spend with **automated shadow billing** to catch utility billing mistakes and avoid overpaying for energy.

Safer
Reliable
Efficient
Secure



PM & Power Quality Meters Recommended Positioning and architecture in an electrical distribution network



ION9000 at Supply side: Electrical utility, independent producers, renewables, etc.

Where: generation and intertie connections

ION9000 at Demand side: industries and critical buildings

Where: main **Incomer's connection (s)** with utility and critical loads

PM8000 at Main LV outgoing feeders if space available or retrofit of existing one:

PowerTag Energy M250/M630 or Rope on other feeders

industries and critical buildings

Where: main connection (s) with critical loads

PM5000 if space available or retrofit at all LV outgoing feeders and Main Loads:

PowerTag Energy Monoconnect or Flex on other feeders and final distribution

Medición de Energía

Precisión



PM8000



ION7400



ION9000



ION8650

V , I , F , Kw , Kwh , THDu/i
Armónicos individuales funciones
+ PF + WF de perturbaciones



PM5560



PM5340



PM5110



PM2000

V , I , F , Kw , Kwh , THDu/i
Armónicos individuales



PM3200



DM6000/6200



iEM2xxx



iEM3xxx

Clase 1 - V , I , F –
V, I, F, Kw , Kwh



Power Tag

Clase 1 - V , I , F,
cos(phi), P, Q, S

Life Is On

Schneider
Electric

Continuous Power Quality Monitoring

Prevent downtime and increase electrical system and asset reliability with permanently installed **PowerLogic power quality meters** that capture detailed information for all of the **power quality disturbances** that occur in your MV/LV electrical networks.

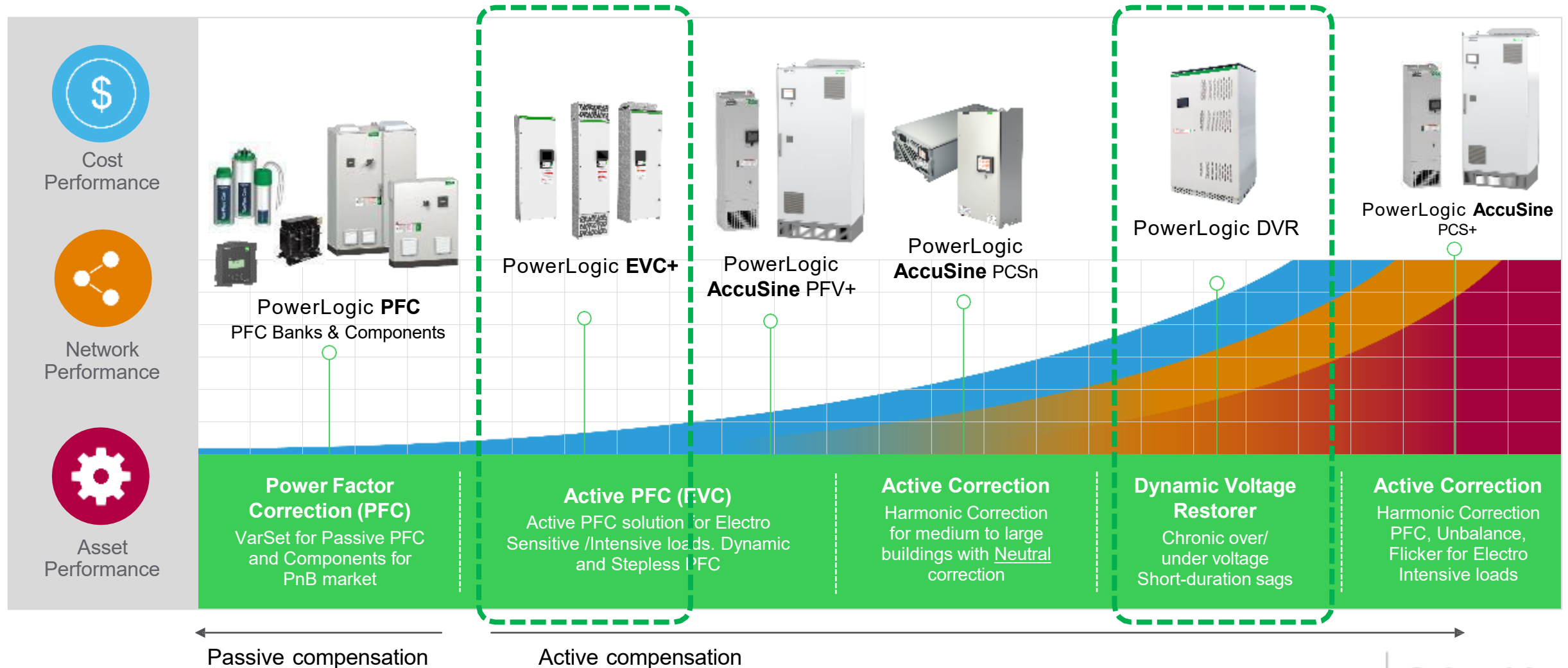


Key PQ Standards for Metering

- **IEC 61000–4–30 Class A**
- **C12.20–2015**
with 0.1% Accuracy Class definition
- **IEC 62053–2 2nd Edition**
with 0.1% Accuracy Class definition

PQ events & disturbances	Level 1	Level 2	Level 3
Transient events with waveforms	✓	✗	✗
Flicker	✓	✗	✗
Disturbance Direction Detection	✓	✓	✗
Interruption with waveforms	✓	✓	✗
Voltage sag/swell with waveforms	✓	✓	✗
Over/under voltage with waveforms	✓	✓	✗
Frequency variation	✓	✓	✗
Unbalance (Voltage & Current)	✓	✓	✓
Harmonics (Voltage & Current)	✓	✓	✓

What's new : Power Quality Product Portfolio – New solutions available

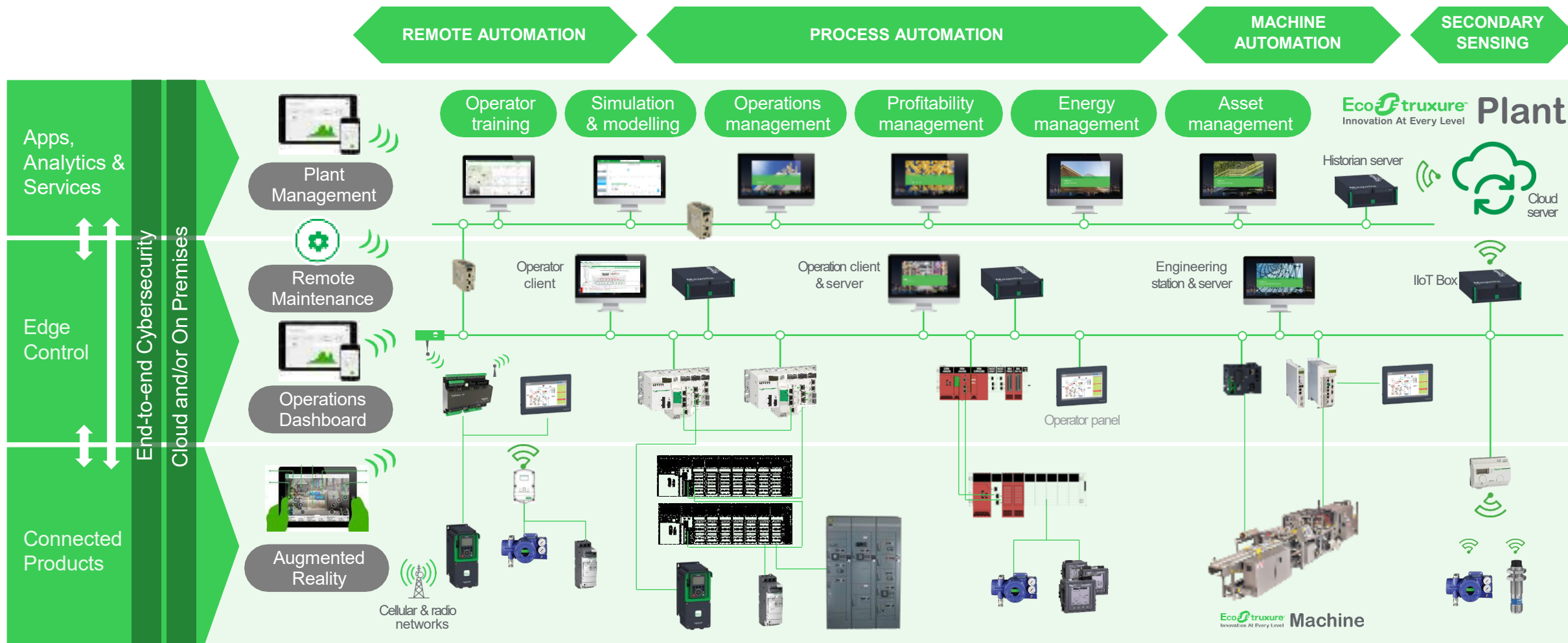


04

Industrial Automation Global range presentation

Entregado a través de soluciones probadas

Combinado Tecnologías (Productos, sistemas y socios) + expertos (servicios y el “know-how” en la Industria)



Connected Products: Mando y Señalización Harmony



XB4 / Ø22mm



XB5 / Ø22mm



XB7 / Ø22mm



XB5R



9001K/SK / Ø30mm



XAL / XAC



Easy Series
XA2/ Ø22mm



XVB7
Ø 70 mm



XVU Ø60
mm



XVM
Ø 45 mm



XVR
Ø 100 mm



XVS10 - 14



Easy Series XVG
Ø 60 mm

Relés Electromecánicos



RSL / RSB / RXG



RXM / RUM / RPM
Easy RXM*LB



SSL / SSM



SSP / SRH

Relés de estado solido

Relés de medida y control



RM17 / RM22 / RM35

Relés Temporizadores



RE17 / 22

RELÉS

Relés E.Mec, Medida, Control & Temp.

CONTROL
Botonería / Selectores / Pilotos

SEÑALIZACION
Balizas / Balizas rotativas

Connected Products: Variación de Velocidad y Arrancadores suaves

Altivar ATV310



Altivar ATV12



Altivar ATV600



ATS01



ATS22



ATS480



Altivar ATV610



Altivar ATV320



Altivar ATV900



ATS130



ATS430



ATS490



Easy Series

Máquinas

Procesos

Arrancadores Suaves

Edge Control: Fuentes de Alimentación, Controladores Lógicos, ePACs, Pantallas y Switches Industriales

Modicon Networking Switches



Power Supplies ABL

Zelio Logic



Modicon Telefast

Smart relays, Connection Interfaces, Power Supplies, Modicon Networking Switches, Telefast



Easy – Modicon TM200



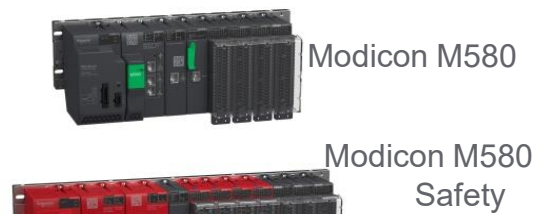
Modicon TM2**



Modicon MCM

Controllers for Industrial Machines

Modicon
Flexible and scalable machine control



Modicon M580

Modicon M580 Safety



Modicon M340

Software

Modicon Edge I/O

ePACs para Control de procesos Industriales, Distributed I/O modules

Modicon
Cibersecurity solutions, Enhanced safety and Innovation at every level

Harmony ST6
Harmony GTO



Easy Harmony

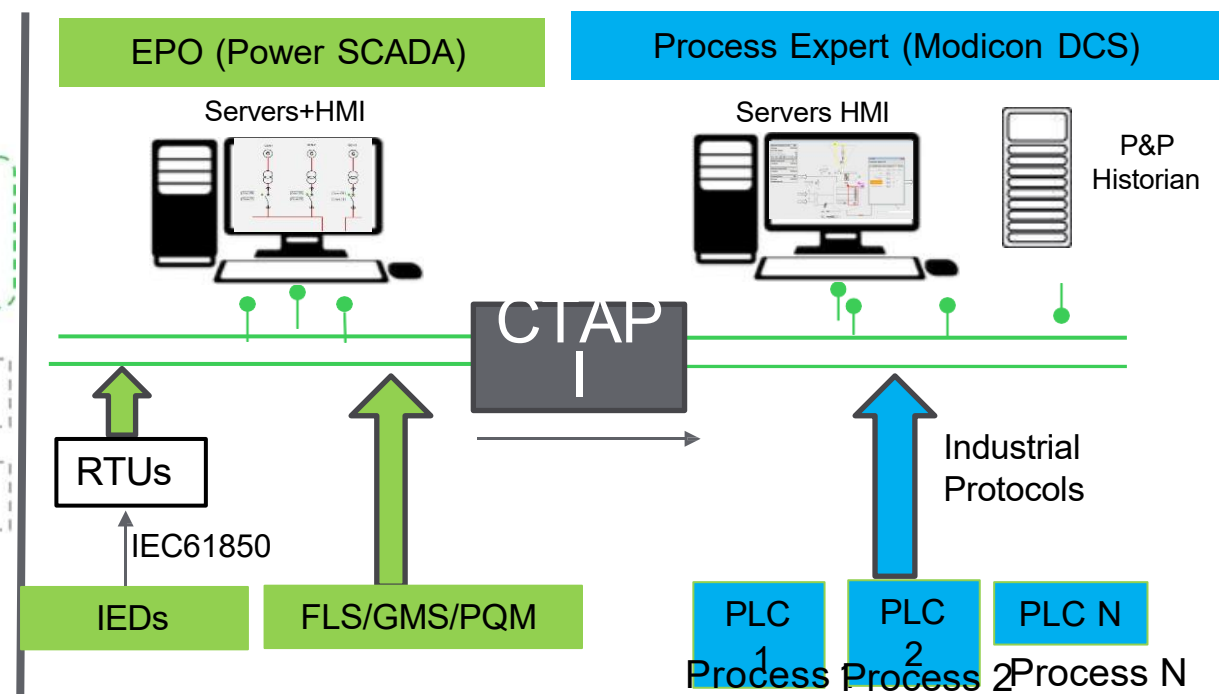
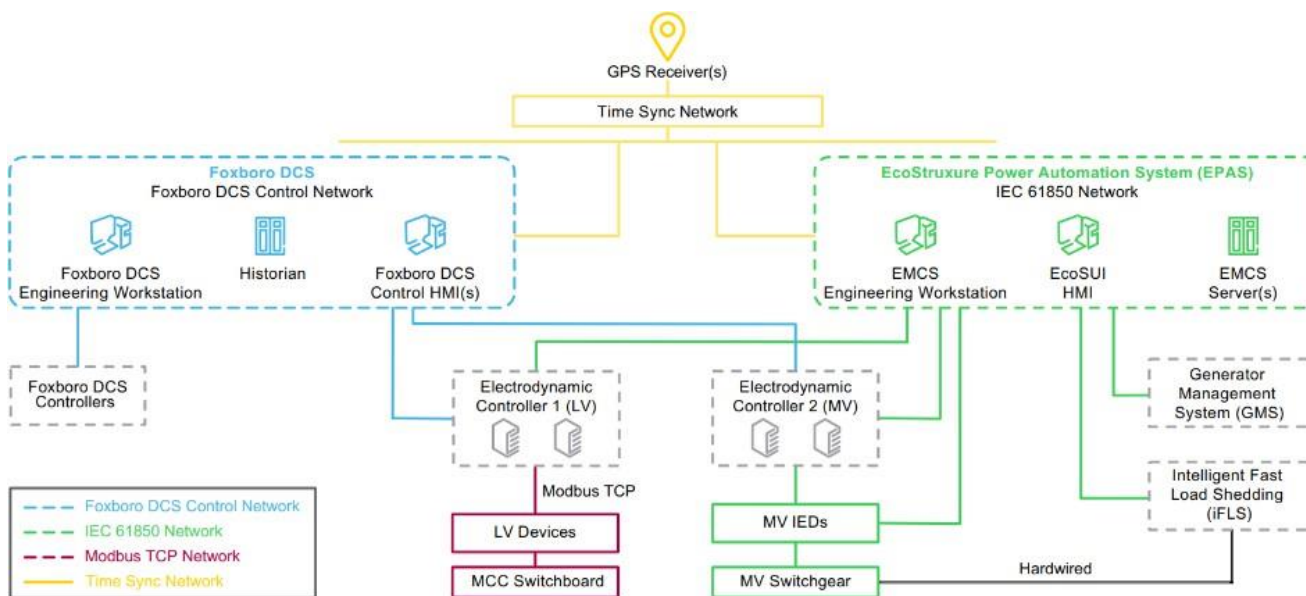


Harmony P6

HMI y PCs Industriales

Harmony
High- resolution and cost efficient

Power & Process Operations



Hybrid DCS+EPO (Electrical SCADA)

Native protocols ; Single Cyber security solution ; Single P&P alarm panel; Single P&P historian; Virtualized redundant configuration

The Altivar Process family: Medium and Low Voltage Drives

Altivar ATV6000
MV Drive Systems
convergence to
Altivar Process family
2.4 kV – 13.8 kV
0.3 MW – 20 MW



Altivar ATV1200
MV Drive Systems
Legacy ranges
315KVA to 16,200KVA



ATV1200 is connected as generic device.
*without specific analytics, monitored with
threshold on measurements, and immediate
notification in case of warnings and errors*

ATV6x0, 9x0 and
ATV990 LV
drive systems
400 V
0.75 kW – 1000 kW



ATV630 and ATV950
LV drive products
APM xA0, xB0, xL0
200 – 400 V
0.75 kW – 315 kW

ATV61 and ATV71
Legacy ranges
380 – 690 V
1 kW – 800 kW



Life Is On

Schneider
Electric

Oferta Foxboro y Telemetría

Neponset , MA-USA



Presión



Temperatura



Data Logger

Stuttgart , Alemania



Nivel



Vortex



Magnéticos



Coriolis



Válvulas



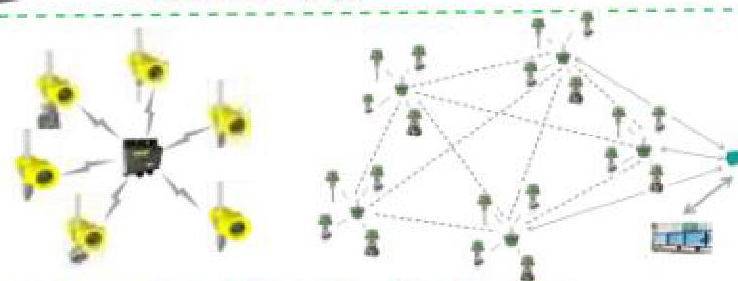
Analítica



SCADAPack 4203



Radios Trio



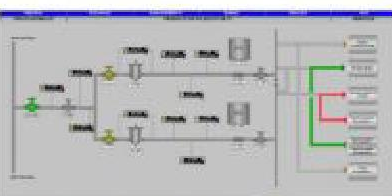
Instrumentación Inalámbrica



Posicionadores



Soultz , Francia



GeoScada



SCADA Pack 570/575

Ontario , Canadá

Hudson , MA-USA

05

UPS – Datacenter Solutions

Global range presentation

Solutions to secure your critical loads and data

UPS

Galaxy VS/VM/VX

Highly efficient 10-1500kVA 3 phase UPS power protection that seamlessly integrates into medium to large data centers, industrial or facilities applications



Smart UPS RT

1 to 6 kVA UPS that protect your critical hardware from damaging surges and power failures, boosting availability levels for critical applications. Units are available in both tower and standard 19" rack formats, mounted in just 2U of space.



Easy UPS 3S ,3M , 3L

10-200kVA, 480V easy-to-install, easy-to-use, and easy-to-service 3 phase UPS for small and medium data centers and other business critical applications.



Easy UPS 1Ph

For small to medium businesses, Easy UPS 1 Ph On-Line (1-10kVA) provides essential power protection for unstable power conditions, ensuring consistent and reliable connectivity at the most critical moments.



Business continuity made easy

Solutions to secure your critical loads and data

Micro Data Center

EcostruXure Micro Data Centers

- C Series - CX & 6U Rack Based
- S Series - SX Rack Based
- R Series - FX Ruggedized



From low-profile, wall-mount to larger, floor-standing enclosures complete with cooling, EcoStruxure Micro Data Center solutions offer a fast, easy way to build and deploy edge computing infrastructure in any environment.

Features include:

- Pre-assembled, pre-tested enclosed rack systems including IT equipment, physical infrastructure, and management software
- Standardized, pre-integrated designs enabling speedy, reliable deployments
- Security cameras, environmental sensors, and access controls to prevent malfunctions and provide visibility into potential security breaches



IT monitoring and maintenance solutions

Managing edge computing sites is critical to ensuring business continuity, requiring around-the-clock monitoring and proactive maintenance to detect and correct issues before they occur.

Solutions to secure your critical loads and data

Data center and Cooling

Prefabricated data center

Easy-to-deploy, prefabricated IT infrastructure packaged within a secure, weather-proof, fire-rated, shipping container for remote or special applications.



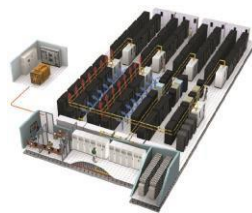
Uniflair® Perimeter Cooling

Leading edge precision cooling solutions specifically designed to maintain temperature and humidity within extremely tight tolerances. These intelligent units monitor the status of components and environmental parameter to ensure correct functionality during all modes of operation.



Data Center

Our Data Center Physical Infrastructure options provide a strong, secure framework that is able to grow and adjust with your needs, while staying in budget and optimizing network performance.



Aquaflair® Technical Chillers

Combining cutting-edge technology with energy efficiency and environmental protection is the basis of these units. Chillers are designed to offer a complete solution for mission-critical installations. High energy efficiency, complete reliability, and total flexibility guarantee total cost of ownership (TCO) reduction.





Transaccional y Edge: Hogar, sala de servidores y armario de red.

Ordenadores y periféricos



UPS 400-1500VA



Protector contra
sobretensiones

Redes y servidores



UPS 400VA-20kVA

Sistemas Edge y Racks



Racks, PDU,
supervisión ambiental y
seguridad, CC modular

Software y Accesorios



PowerChute y tarjetas
de gestión de red

Centro de datos: Apoyo a los centros de datos empresariales de colocación y en la nube.

Power



Alimentación UPS trifásica

Prefab



Prefabricados:
Módulos prefabricados

Cooling



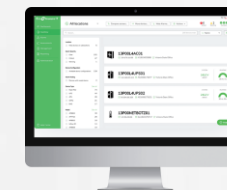
Aire acondicionado
y enfriadores

BT y MT



Venta cruzada

Software



EcoStruxure IT

Industrial: Aplicaciones industriales pesadas y ligeras

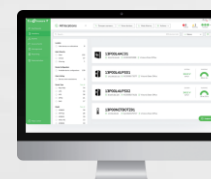
UPS Monofásicos



UPS Trifásicos



Software



EcoStruxure IT

Software y Accesorios



PowerChute y tarjetas
de gestión de red



Cartera de productos Secure Power

06

Motor Management – Contactores e Interruptores Global range presentation

Panorama de la oferta

Esquemas de utilización

Protección

- ✓ Contra cortocircuito.
- ✓ Contra Sobrecargas
- ✓ Contra fallas a tierra

¿A quienes?

- ✓ A las personas.
- ✓ A los equipos
- ✓ A las instalaciones

¿En donde?

- ✓ Sector Industrial
- ✓ Sector Construcción

Garantizar la
continuidad del
servicio

6300A

Nivel A

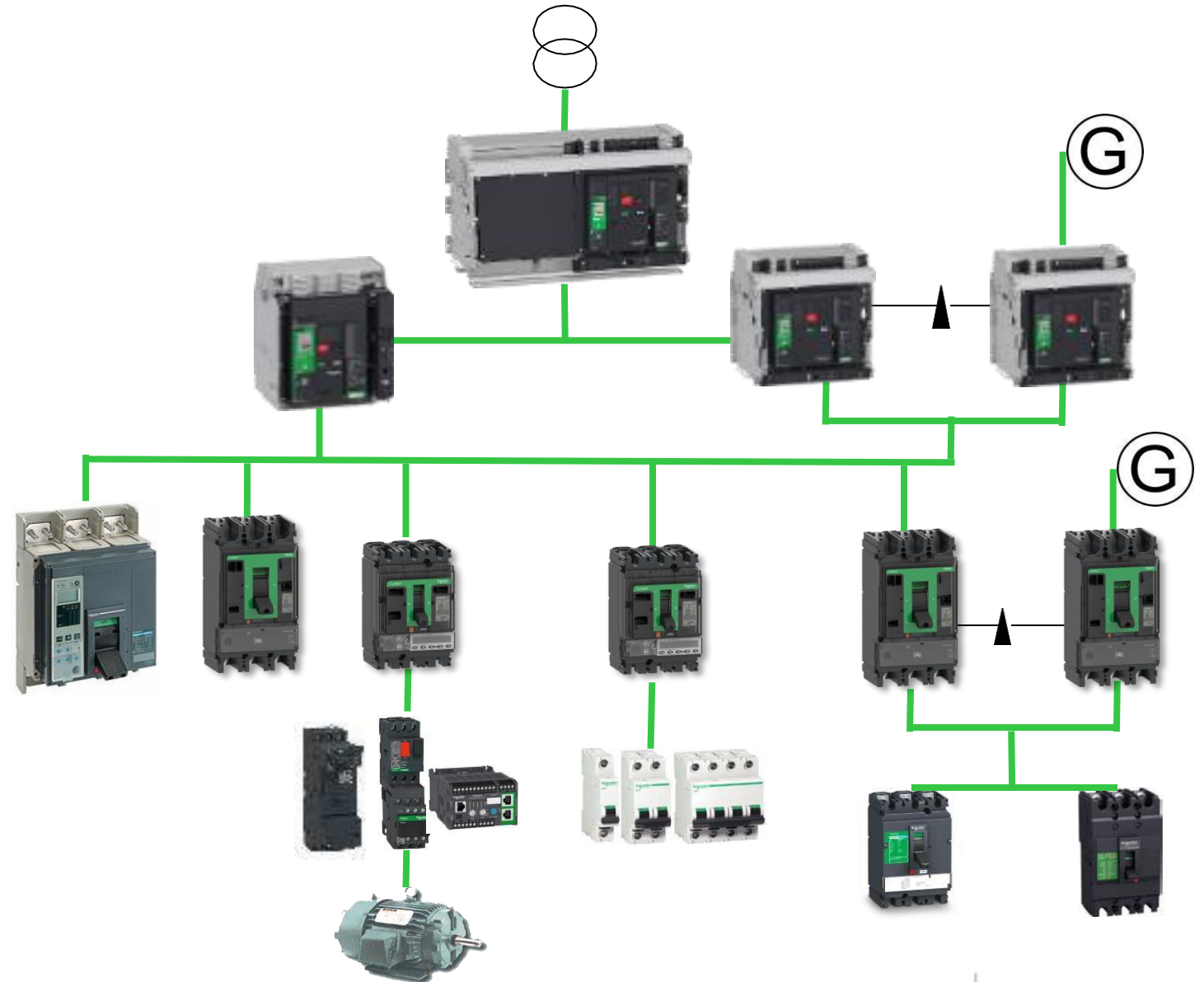
1600A

Nivel B

125A

Nivel C

0,5A



Life Is On

Schneider
Electric

Serie Pact

Berie Easy

Ecostruxure™

Easy

****Easy9 - lcn**

MasterPact MTZ Performance Levels

2 + 1 Frame Sizes

Five performance levels
N1 | H1 | H2 | H3 | L1

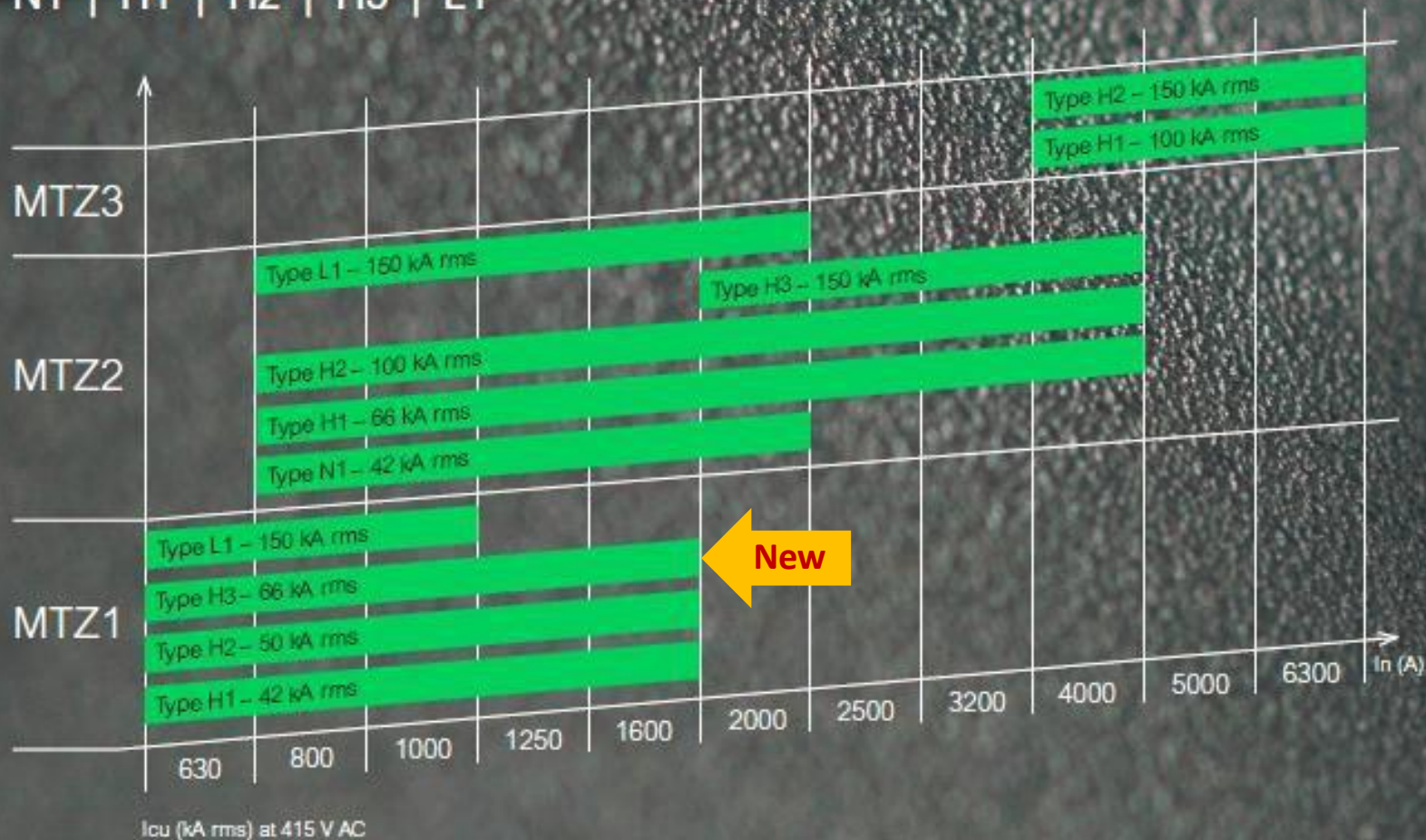
MTZ 3
4000A
to
6300A



MTZ 2
800A
to
4000A



MTZ 1
630A
to
1600A



08

CyberSecurity

Global range presentation

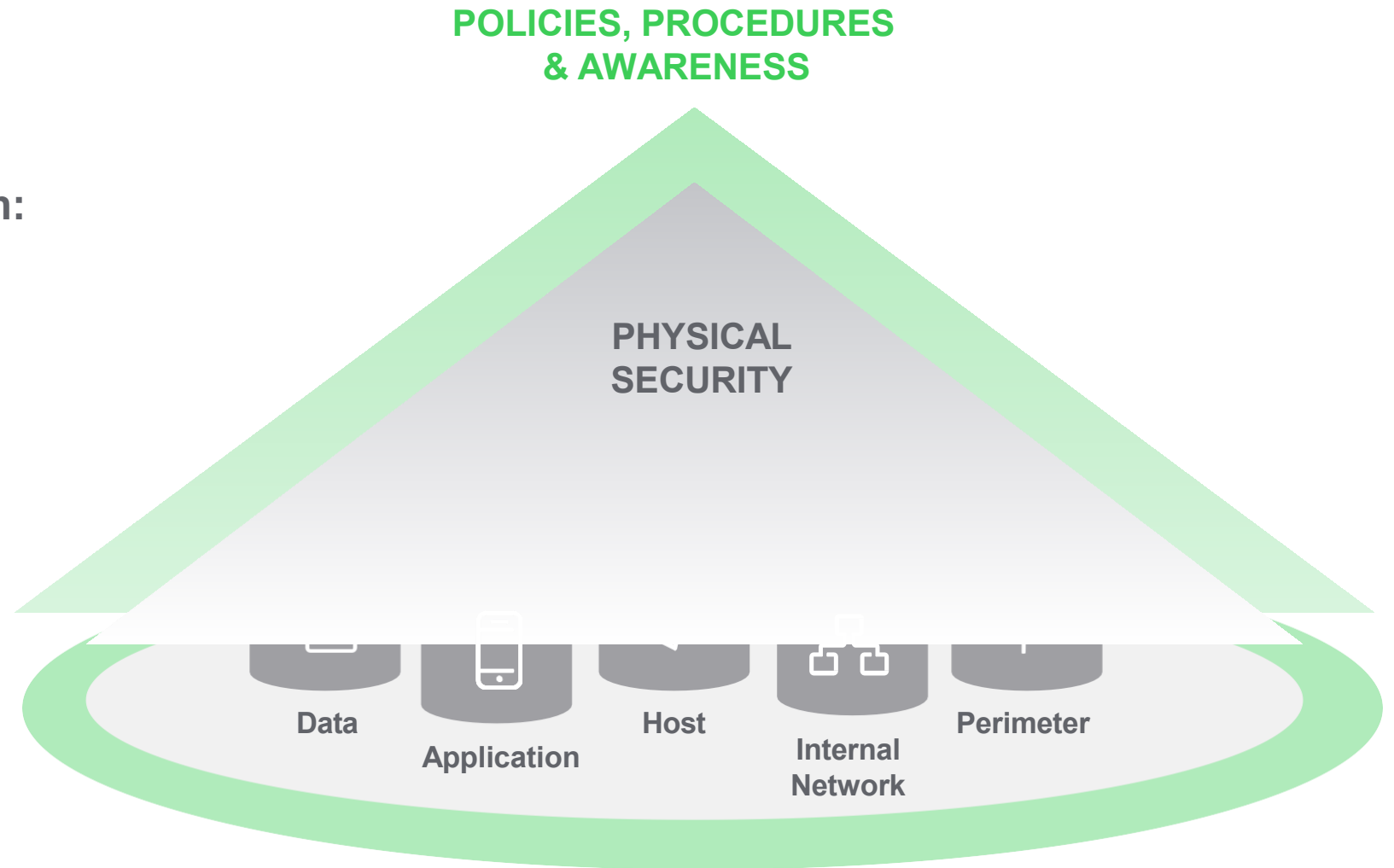
Schneider Electric cybersecurity solutions

Differentiation:

- Depth in IT
- Depth in OT
- Flexible
- Customized

Defense in depth:

- People
- Process
- Technology



Cybersecurity solutions and services portfolio

Partners that support us

Security Consulting – Design & Implementation – Monitoring – Maintenance – Training



Services

Capability

- Standard Gap Assessments
- Cybersecurity Risk Assessments
- Secure Network Design
- System Hardening
- Incident Response Planning
- Penetration Testing*
- Cybersecurity Training*
- Documentation & Policy Development*

* Custom/Specialized



Solutions (Aligned to IEC 62443)

Capability

- | | |
|-----|----------------------------------|
| SL1 | Active Directory/User Management |
| | Backup and Recovery |
| | Endpoint Protection |
| | Patch Management |
| | Network Segmentation/Firewalls |
| SL2 | Secure Remote Access |
| | Anomaly Detection |
| | Intrusion Detection/Prevention |
| SL3 | Log Management |
| | Automated Asset Inventory |
| | Multifactor Authentication |



Supporting Technology

Capability

- Network Performance Monitoring
- Removal Media Control
- Application Control (Whitelisting)
- Security Data Enrichment (SIEM)
- Security Orchestration, Automation, and Response (SOAR)*



Sustainability (Recurring)

Capability

- 24x7 Managed Detection & Response (MDR)*
- Security Device Management (SDM)
- Incident Response & Recovery*

09

AVEVA

Global range presentation

SCOPE OF DIGITAL SERVICES

Digital Services is a strategic suite of solutions and consulting services that use technology to optimize operations, reduce costs, increase efficiency, and sustainability. Our aim is to support customers on their digital transformation journey.



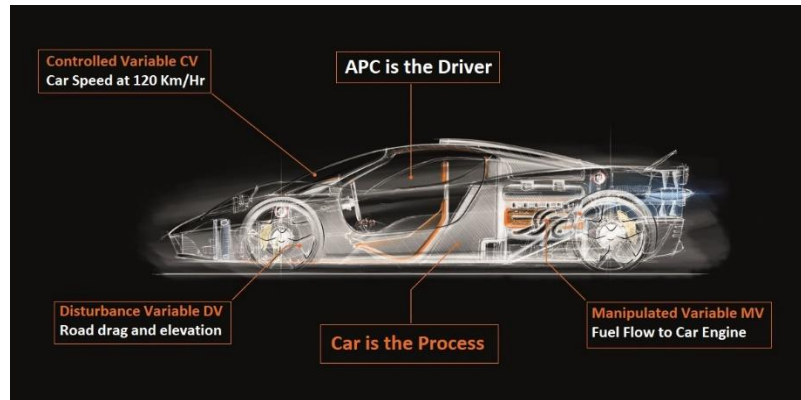
SCOPE

- ✓ **IDT Consulting:** Developing a digital roadmap to strategically guide the transformation process.
- ✓ **AVEVA Solutions:** Predictive Analytics, Unified Operation Center, MES, AMPLA
- ✓ **Software Services:** APC, OTS & Offsites
- ✓ **Smart Computer Vision:** EPPs Detection, Quality Control, Leaks & Level Monitoring
- ✓ **Cybersecurity**
 - High Level & Risk Assessments
 - Continuous Thread Detection
 - Disaster Recovery
- ✓ **SE Advisors & Others:** Asset Advisor, Maintenance Advisor, Transformer Expert, System Advisor
- ✓ **IA R&D – Development of Solutions - Innovation**
 - Portfolio Integration(OT & IT Integration)
 - Development of new solutions
 - Data Science Projects
- ✓ **Deployment of PoC(Proof of Concept)**

Digital Services

Advanced Process Control APC

The APC (Advanced Process Control) solution is software that optimizes real-time industrial process performance. It uses mathematical models and algorithms to predict and control process variables, enhancing efficiency, reducing variability, and increasing production.



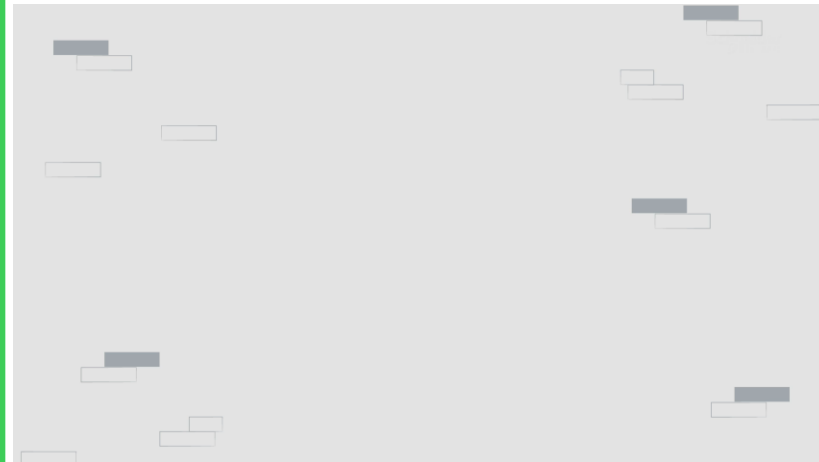
Offsites – Tank Management

The Offsites Management solution is software that optimizes tank management and logistics at industrial facilities. It facilitates efficient inventory management, transfers, and product storage in tanks, improving coordination between production and distribution to maximize efficiency and reduce costs.



Operator Training Simulator

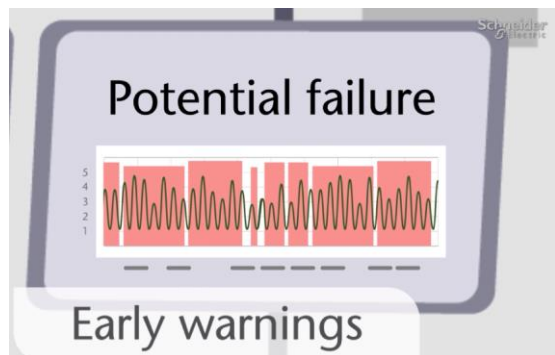
The Operator Training Simulator (OTS) solution is a simulation system that provides a virtual environment for operator training. It allows operators to practice and master complex industrial processes in a safe and controlled setting, enhancing operational efficiency and reducing the risk of errors in real plants.



Digital Services

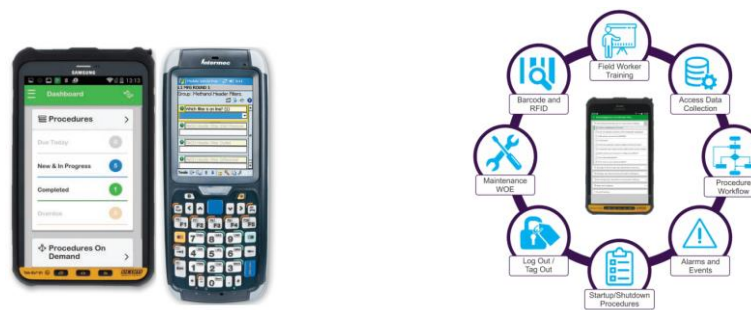
Predictive Analytics

AVEVA Predictive Analytics solution is software that uses advanced models and machine learning to analyze real-time data, forecast equipment performance, and predict failures before they occur. This enables businesses to perform proactive maintenance, optimize operations, and reduce downtime



Mobile Operator Round

The AVEVA Mobile Operator Rounds solution not only streamlines maintenance workflows but also enhances visibility into non-instrumented or "stranded" assets. By providing mobile access to data and workflows, it allows field operators to monitor these often overlooked assets effectively.



UOC

The AVEVA Unified Operations Center is a sophisticated enterprise visualization platform that enhances real-time operational performance across infrastructure and process industries. This centralized system integrates data from IT, OT, and ET, embodying a "**System of Systems**" approach to provide comprehensive visibility and control.



Welcome to the future of
Operational Management

Digital Services

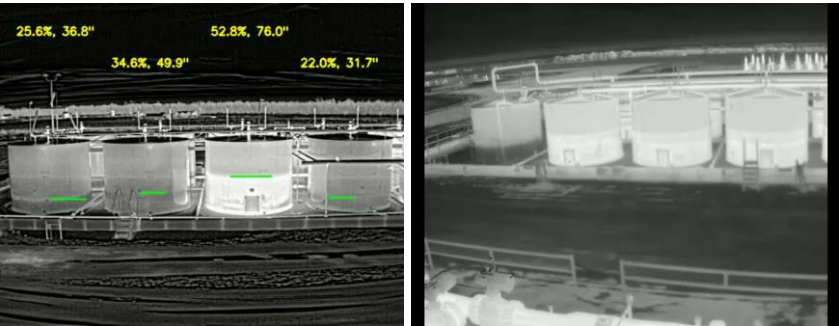
Digital Work Permits

The AVEVA Digital Work Permits solution digitizes and simplifies the permit-to-work process, enhancing traceability and safety in industrial settings. It transforms how work permits are managed, ensuring better compliance and safety oversight.



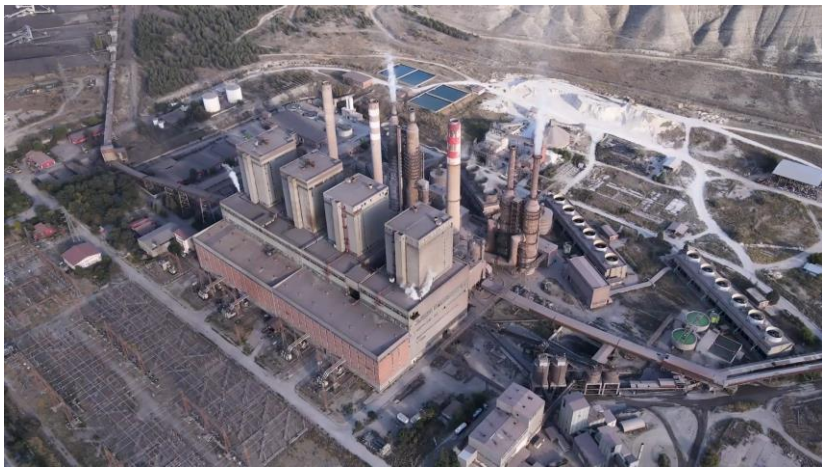
Smart Computer Vision

Smart Computer Vision involves utilizing machine learning models linked to cameras to detect patterns. These models process images and video feeds in real-time, identifying and interpreting objects and activities to automate various tasks or provide insights across multiple applications.



IDT Consulting

IDT Consulting in Industrial Digital Transformation specializes in advising companies on integrating digital technologies into their industrial processes. Their services aim to optimize operations and enhance competitiveness through digitalization, with a focus on developing a digital roadmap to strategically guide the transformation process

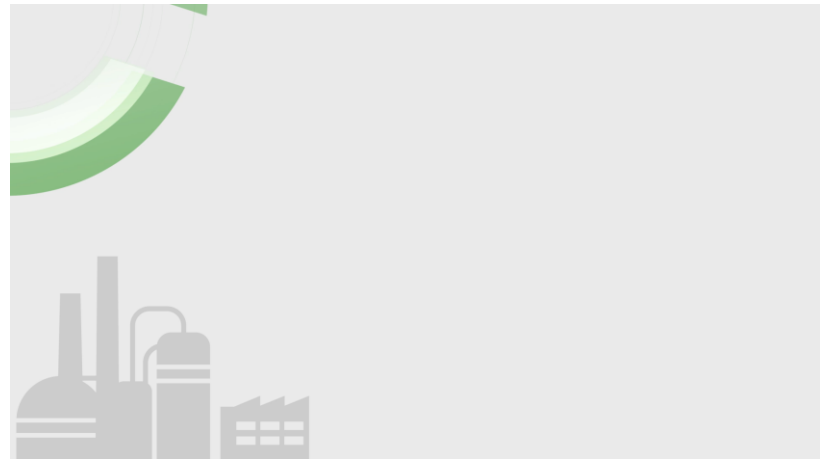


Digital Services

Cybersecurity

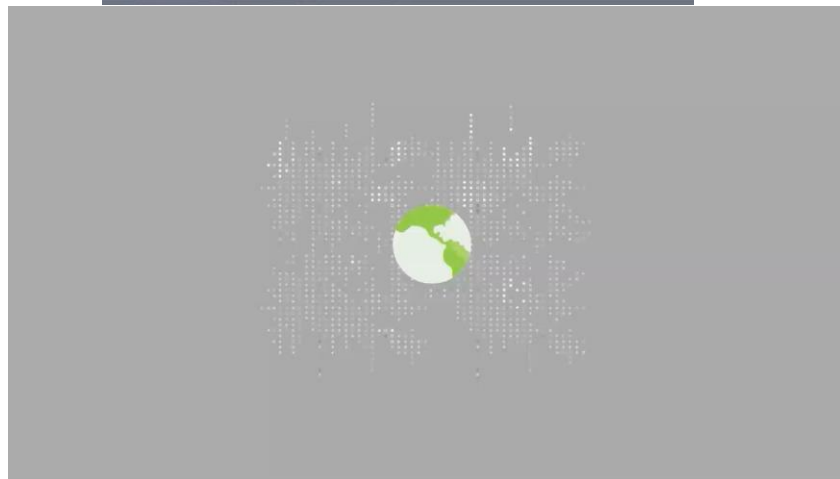
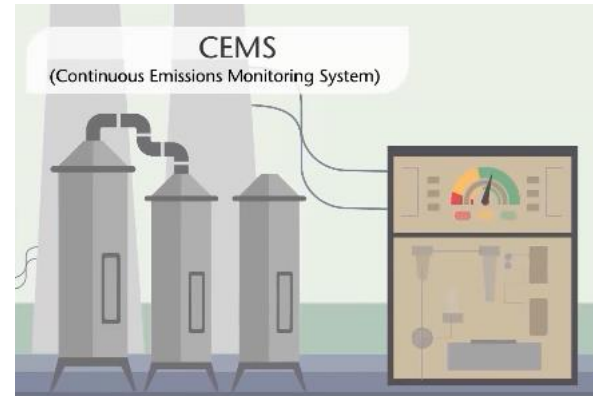
Schneider Electric offers a comprehensive range of cybersecurity services designed to protect both IT and operational technologies from cyber threats. These services include:

- ✓ SIEM for network monitoring and threat detection.
- ✓ Managed Security Services to proactively mitigate risks.
- ✓ Cybersecurity Assessments for evaluating security controls.
- ✓ Secure Remote Access for critical applications.



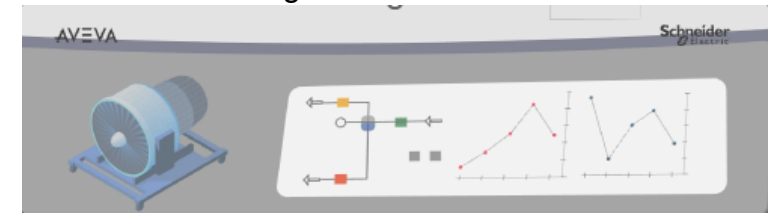
Predictive Emission Monitoring System

Predictive Emission Monitoring System (PEMS) is an advanced software solution that uses mathematical models and artificial intelligence algorithms to predict pollutant emissions from industrial processes.



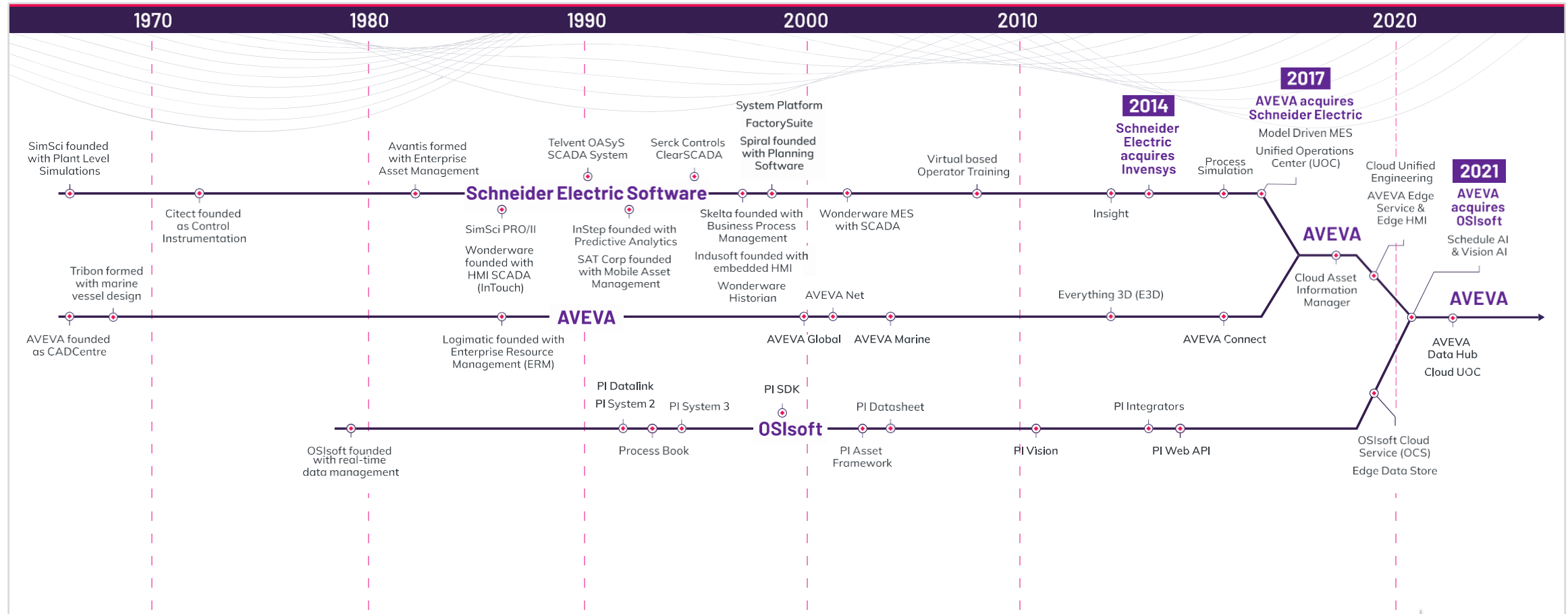
Digital Twin

A digital twin is a dynamic virtual representation of a physical object, process, or system that uses real-time data to simulate its state and behavior. This technology enables businesses to analyze, predict, and optimize operations through accurate simulations, facilitating predictive maintenance, continuous improvement, and innovation. Digital twins are applied across various industries, from manufacturing to healthcare, helping to enhance efficiency, reduce costs, and promote sustainable practices by integrating artificial intelligence and machine learning.



AVEVA's unique history dates back 55 years

Continual innovation drives an amazing future to build upon five plus decades of success



Our software drives transformation for 20,000 customers



Energy



Power



Food, Bev, CPG,
Life Sciences



Chemicals



Infrastructure



Mining



Marine



EPC

ExxonMobil



ConocoPhillips



nationalgrid

enel



Genentech



INEOS



नया रायपुर



Peabody

BHP

NUCOR
It's our Nature.™



CODELCO



Irving Shipbuilding, Inc.



Kawasaki Heavy Industries, Ltd.



wood.

Worley
energy | chemicals | resources



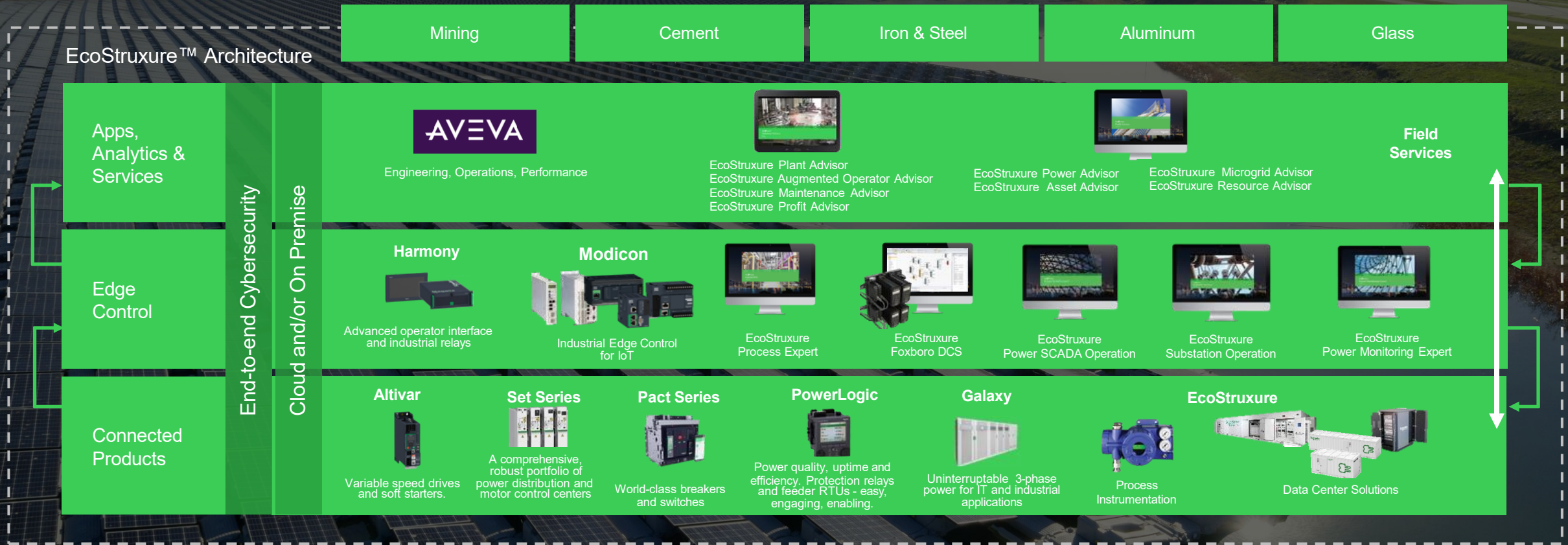
شركة البعثات البترولية الوطنية

MCDERMOTT



An integrated digital architecture, the enabler of efficiency and sustainability

EcoStruxure™
Innovation At Every Level



*The Schneider Electric industrial software business and AVEVA have merged to trade as **AVEVA Group plc**, a UK listed company. The Schneider Electric and Life is On trademarks are owned by Schneider Electric and are being licensed to AVEVA by Schneider Electric.