

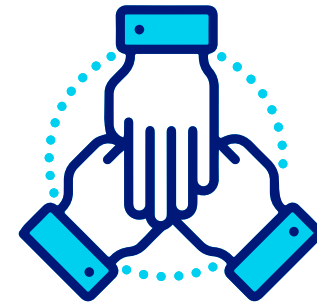


omnicon

..... Dream it, we make it **real**

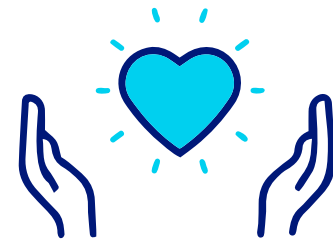
We improve lives worldwide believing in growing as One, moving beyond technology by understanding our clients' processes and successfully solving their challenges together. We foster true long-term relationships through an adaptable service culture that promotes innovation.

Transparency



Honesty to others is just as important as honesty to ourselves, we respectfully show our feelings and thoughts as they can help each other grow.

Attitude



What we do, we do because we care! We strive to make the world a better place; passion, good will and a smile on our face is the way to get there.

Trust



We believe in others, in their work and their good will. Trust is the basis to build long-term relationships, we know it and reflect it in our lives.

Inspire



To strive for greatness we must be more than excellent. We are the source of inspiration for others to grow and the light that guides renewal in our stakeholders.

Grit



We bet on our ideals and projects; we strive until we make them happen. Everything we go through leads to learning and evolution, and we love it.

At Omnicon we believe that an integrated organization is a thriving one. We move beyond technology by becoming your integrated manufacturing automation partner, understanding your processes and successfully solving your challenges.

We know that the key to accelerate your business' growth is to create a seamless integration between the corporate team and the manufacturing plants around the world. Therefore, we create bridges in your organization that lead to an efficient production flow, relying on data, technology and process automation.



So, why are we here?

To make your ambition a reality through disruptive, innovative technology and processes integrations.

30
Years experience

+170
Employees

+2.000
Projects aboard

+65
Diferent countries

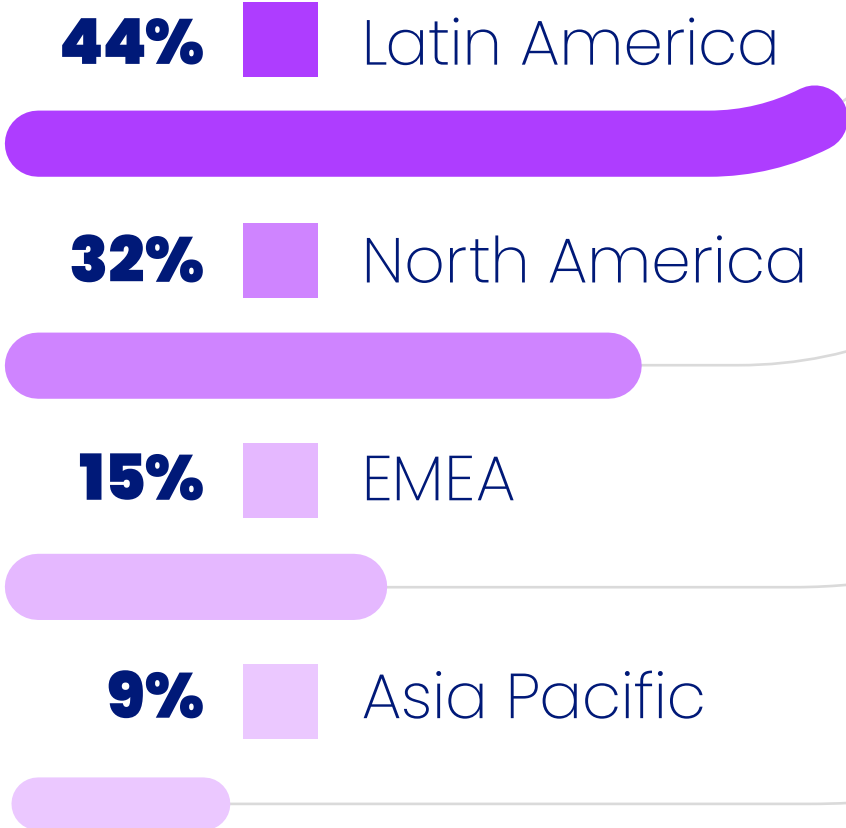
30
Diferent professions

Omnicon is a technology company focused on understand our customers needs, improve the operational technology infrastructure and generate manufacturing intelligence to solve the challenges of the new era.

Many years of experience accompanied by a great support and trust from our customers, suppliers, distributors, allies and collaborators are our best presentation card.



BY REGION

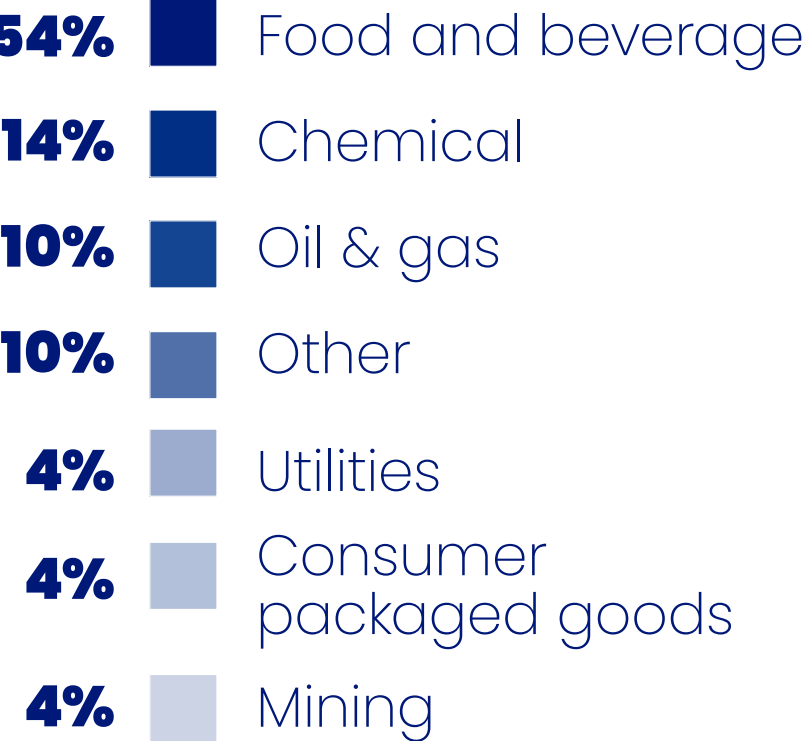


We have been fortunate to work in the most important production segments: food and beverage, consumer packaged goods, chemical, pharma, mining & cement, oil & gas, utilities.

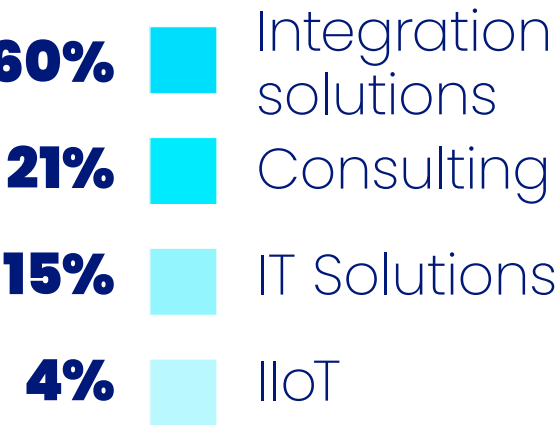
Creating synergies with our customers and generating confidence, having an ally that become part of your organization.



BY INDUSTRY



BY SEGMENT



Pillars of key value proposition

To make this value proposition possible, we have a consultative approach model that guarantees a complete understanding of our clients to support their challenges and opportunities. The consultative approach is based on 3 pillars:

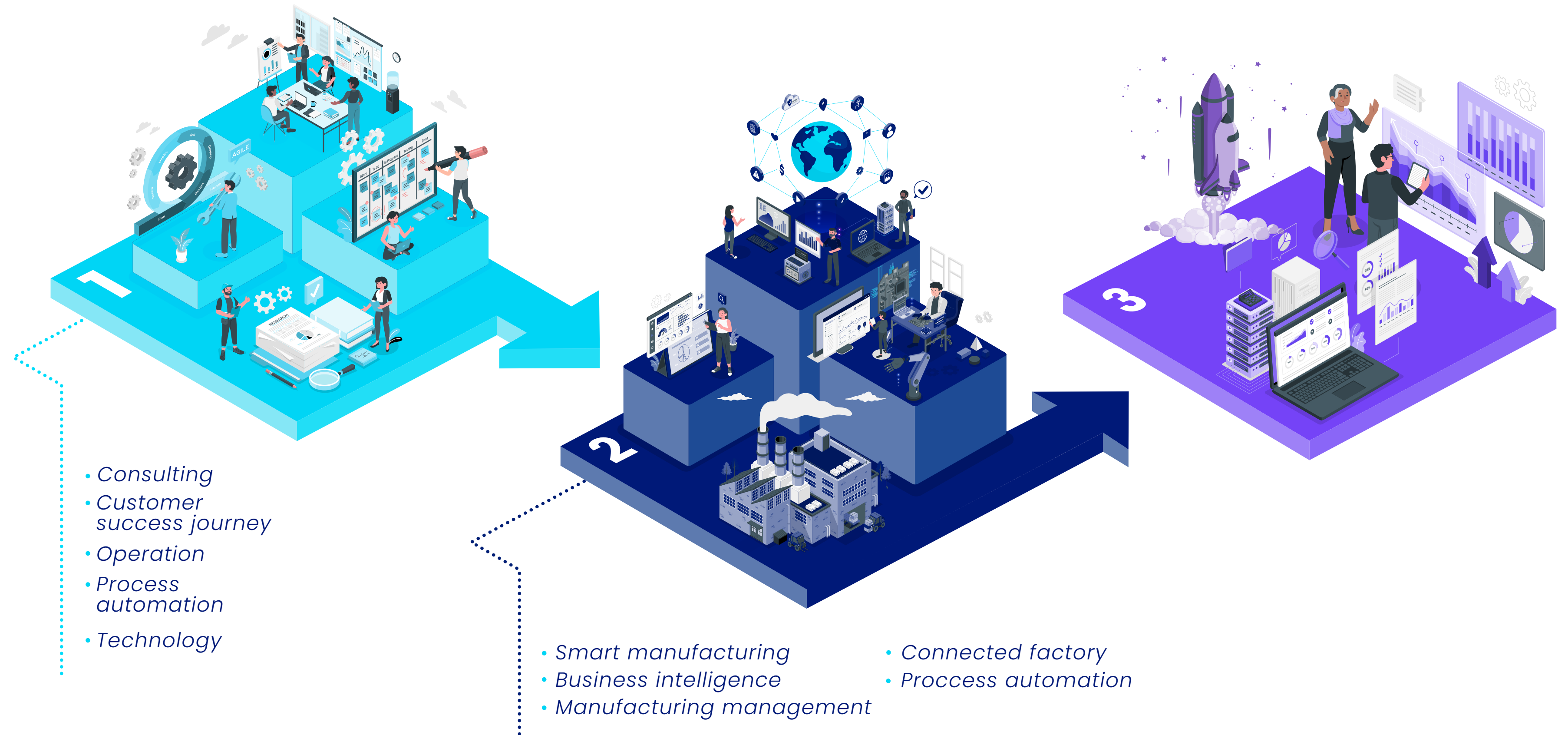


CONSULTANCY + IMPLEMENTATION = RESULTS

Business Understanding + Design

Technological Approach + Execution

= Orchestration



To execute our value proposition and understand the pillars of the business, working from the conception stages is our success key. We start with a specific need, an operational requirement or an improvement opportunity and analyze how this opportunity impacts the business drivers.

Then we validate with the client those opportunities and prioritize them to creating cost effective designs that we turn into a reality through implementation.

1

- MES/MOM Design
- MES/MOM Implementations
- Orchestration

2

- KPI, Dashboards and Reports
- Data Management (Big Data, Datawarehouse, Data lake)
- Analytics

3

- HMI
- SCADA
- Alarm Management

4

- Procedures
- Protocols (FAT / SAT)
- Work Instructions
- Playbooks

5

- Batch Systems
- Continuous Systems
- Migrate / Update Systems
- SIS – Process

6

PMI
SCRUM

7

- Domain Services
- Cybersecurity
- Firewalls and Switch Logical Layer Design & Configuration

Smart Manufacturing

We guide you through the journey to define your digital transformation strategy, transforming what matters.

We understand that technology is not the goal but instead is the driver to achieve goals; for this reason, we developed a framework in which our consultants understand the current state of your business. Identifying the gaps associated to your goals and designing not only technological solutions, but all the possible solutions that can help closing those gaps.



- MES/MOM Design & Implementation
- Operational Intelligence

- Analytics and reports
- Connected Factory

- Industrial Internet of Things (IIoT)

We understand that technology is not the goal but instead is the driver to achieve goals; for this reason, we developed a framework in which our consultants understand the current state of your business. Identifying the gaps associated to your goals and designing not only technological solutions, but all the possible solutions that can help closing those gaps



- Customer Success Journey (Digital Transformation).
- Operation (MES/MOM).



- Process Automation (Automation).
- Technology (Connectivity).


Automation We prepare your automation systems to boost today's performance and easily adapt to tomorrow's integration demands.

We went outside the definition of conventional process automation by reinventing the concept to meet customer expectations and requirements in the information, people, assets and process revolution. We have moved from the computer era, where the PLC and its decisions were revolutionary, to a new era where autonomous systems, intelligent sensors, information, data, safety and integration are the pillars of process automation.



- System Design & Documentation
- Greenfield / Brownfield projects
- Upgrades
- Support and Maintenance
- Networking
- Corporate programs

Partners



GOLD

System Integrator

A ROCKWELL AUTOMATION PARTNER


AVEVA

CERTIFIED System Integrator

Certified Operate

Gold

Microsoft Partner



Tech Capabilities



AVEVA







SIEMENS



vmware

Certifications



csia

CERTIFIED







contact us

sales@omnicon.co

omnicon

..... Dream it, we make it **possible**

See more in:

Contact Us:



sales@omnicon.co



GOLD
System Integrator
A ROCKWELL AUTOMATION PARTNER

Gold
Microsoft Partner
 Microsoft

